



Planning Across Freshwater and Terrestrial Realms: Cobenefits and Tradeoffs Between Conservation Actions

Vanessa M. Adams^{1,2,3}, Jorge G. Álvarez-Romero^{1,2}, Josie Carwardine⁴, Lorenzo Cattarino⁵, Virgilio Hermoso^{1,5}, Mark J. Kennard^{1,5}, Simon Linke^{1,5}, Robert L. Pressey^{1,3}, & Natalie Stoeckl^{1,6}

¹ National Environmental Research Program Northern Australia Hub

² Research Institute for the Environment and Livelihoods, Charles Darwin University, Darwin, NT 0909, Australia

³ Australian Research Council Centre of Excellence for Coral Reef Studies, James Cook University, Townsville, QLD 4811, Australia

⁴ CSIRO Ecosystem Sciences, Dutton Park, QLD 4102, Australia

⁵ Australian Rivers Institute, Griffith University, Nathan QLD 4111, Australia

⁶ School of Business and Cairns Institute, James Cook University, Townsville QLD 4811, Australia

Keywords

Systematic conservation planning; terrestrial spatial planning; freshwater spatial planning; cross-realm planning; cross-system threat; ecological connection.

Correspondence

Vanessa M. Adams, Research Institute for the Environment and Livelihoods, Charles Darwin University Darwin, NT 0909, Australia.

Tel: +61-8-8946-7449;

fax: +61-8-8946-7455.

E-mail: vanessa.adams@cdu.edu.au

Received

12 September 2013

Accepted

2 December 2013

Editor

Reed Noss

doi: 10.1111/conl.12080

Abstract

Conservation planning has historically been restricted to planning within single realms (i.e., marine, terrestrial, or freshwater). Recently progress has been made in approaches for cross-realm planning which may enhance the ability to effectively manage processes that sustain biodiversity and ecosystem functions (e.g., connectivity) and thus minimize threats more efficiently. Current advances, however, have not optimally accounted for the fact that individual conservation management actions often have impacts across realms. We advance the existing cross-realm planning literature by presenting a conceptual framework for considering both co-benefits and tradeoffs between multiple realms (specifically freshwater and terrestrial). This conceptual framework is founded on a review of 1) the shared threats and management actions across realms and 2) existing literature on cross-realm planning to highlight recent research achievements and gaps. We identify current challenges and opportunities associated with the application of our framework and consider the more general prospects for cross-realm planning.

Introduction

Conservation budgets are often limited, creating the need to allocate funding for management actions in a way that maximizes conservation outcomes (Carwardine *et al.* 2008). Despite the critical need to allocate resources in a cost-effective manner, the potential cobenefits of different management actions for biodiversity across multiple realms (terrestrial, marine and freshwater) are rarely considered when prioritizing conservation interventions (but see Hazlitt *et al.* 2010; Klein *et al.* 2012).

Systematic conservation planning efforts began 30 years ago with applications to terrestrial and freshwater ecosystems (Kirkpatrick 1983). Subsequent studies emerged at a greater rate for the terrestrial realm than for marine (Leslie 2005) and freshwater environments

(Linke *et al.* 2011). To ensure conservation plans are efficient, a central tenet of systematic conservation planning is complementarity (i.e., conservation areas should be selected to maximize the differences in their biotic content: Sarkar *et al.* 2006). This principle dictates that integration of all objectives and data should happen from the outset of the planning process (Kirkpatrick 1983; Pressey 2002). This concept has been interpreted in terms of complementary between areas, but rarely discussed in relation to complementarity of actions, particularly regarding their benefits across realms. Moilanen (2008) discussed a generalized concept of complementarity that considers the effects of actions across a landscape, including interactions between actions (different benefits and losses for different conservation features), ecological interactions between features (off-site effects), and economic

interactions (cost-effectiveness). However, an in-depth exploration and operationalization across realms of a generalized concept of complementarity is lacking.

Links between realms mean that actions in one realm can affect another. As such, failure to consider these links in integrated systematic conservation planning (hereafter, *cross-realm planning*) means that planners can underestimate the effect of actions that benefit multiple realms (hereafter, *cobenefits*). Alternatively, investing in a particular action in one realm might detract from actions in another realm, or similarly, investing in a particular action might benefit one realm significantly more than another (hereafter, *tradeoffs*). Lastly, failure to plan across realms can also have undesirable and unanticipated ecological consequences (Álvarez-Romero *et al.* 2011; Vance-Borland *et al.* 2008). For example, siting marine reserves without considering land-based threats can lead to cost-ineffective spatial configurations such as investing in reservation of areas degraded by land-based pollution when alternative sites can be protected (Tallis *et al.* 2008). Similarly, using natural geographic boundaries such as rivers as administrative boundaries, say for national parks, fails to protect whole catchments, leaving portions open to terrestrial activities that can adversely affect river systems within or adjacent to reserves (Nel *et al.* 2007).

The potential cobenefits in cross-realm planning are more evident when planning for specific conservation actions (and thus considering action complementarity), as opposed to considering only generic protection such as reservation—in which case the interactions of protection between realms are less explicit (Reyers *et al.* 2012). For example, an action like fencing of the riparian zone to prevent cattle access can benefit riparian vegetation and associated terrestrial fauna – but also benefit aquatic systems by intercepting sediments and nutrients flowing from the land as well as providing a host of other potential benefits (Naiman & Decamps 1997; Pusey & Arthington 2003). Moreover, fencing can generate financial benefits to private business (e.g., preventing cattle from straying into, and possible getting stuck in muddy zones—Ross *et al.* 2011), which in turn can improve social acceptability (and cost-effectiveness) of conservation actions (hereafter, *actions*) that benefit both terrestrial and freshwater ecosystems. Although examples of cobenefits are more common (e.g., Robins 2002; Bohle *et al.* 2008), there are examples of tradeoffs, such as the construction of artificial wetlands that likely benefit freshwater species while altering the composition of terrestrial communities (e.g., Ernst & Brooks 2003), or the use of herbicides for terrestrial weed control that have detrimental impacts on aquatic fauna (Rybicki *et al.* 2012).

Fully integrated cross-realm planning should thus consider the full array of ecological and socioeconomic cobenefits and tradeoffs across realms arising from any given set of actions. There has been a recent push for planning across realms (e.g., Stoms *et al.* 2005; Beger *et al.* 2010), but most studies claiming integration across realms only tangentially consider some form of influence of one realm on another (commonly threats originating in one realm and affecting another, a.k.a. cross-system threats), and rarely allocate actions for multiple realms (Álvarez-Romero *et al.* 2011).

The absence of truly integrated cross-realm planning is likely because of both governance and technical capability. Many jurisdictions and mandates of agencies and nongovernment environmental organizations are externally aligned with, or internally divided by, specific realms, inhibiting consideration of cross-realm interactions. But technical barriers to integrated cross-realm planning are substantial, related partly to limited data and understanding of cross-system threats and off-site effects of actions and partly to the capabilities of decision-support tools. Hence, our article aims to establish a framework to further advance integration by examining two key aspects of this approach: cobenefits and tradeoffs; in doing so, we aim to provide conservation planners with information that can help them to make more cost-efficient and effective management recommendations by thinking of ways to capitalize on cobenefits and to minimize tradeoffs.

The specific objectives of this article are to:

- (1) Explore potential cobenefits and tradeoffs in cross-realm planning;
- (2) Review literature on cross-realm planning to highlight research progress and gaps;
- (3) Present a conceptual framework for considering cobenefits and tradeoffs between multiple realms; and
- (4) Identify challenges and opportunities to advance cross-realm planning.

We focus on cross-realm integration for terrestrial and freshwater environments because this is critical for effective catchment planning and because linkages between these realms have been neglected in cross-realm studies relative to terrestrial–marine connections (Nel *et al.* 2009). We use a case study to illustrate our conceptual framework and exemplify cobenefits and tradeoffs associated with cross-realm planning.

Identifying cobenefits and tradeoffs in actions for freshwater and terrestrial conservation

Cross-realm planning requires an understanding of cross-realm threats, whether threats are shared across realms or arise in one and affect another. It also requires an understanding of the extent to which actions to mitigate threats propagate their benefits or adverse impacts across realms.

We expand upon the classification by Álvarez-Romero *et al.* (2011) of threats and stressors across realms to indicate the extent to which threats influence both terrestrial and freshwater realms. We then describe actions that can be used to mitigate each threat, indicate the extent to which each action is the same for freshwater and terrestrial planning, and assess whether the spatial location of these actions would differ if planning for each realm independently (Table 1). Lastly, we use a case study, the Daly River catchment in northern Australia, to illustrate the theoretical cross-realm planning concepts (Box 1; Figure 1; Table S1). We selected the Daly catchment as our case study because of the breadth of data and research available for the catchment. In addition, there are a number of threats in the catchment relating to land use, invasive species, and altered fire regimes that allow us to examine a variety of concepts that are generalizable to other regions globally.

Box 1: Case study of the Daly River catchment, Northern Territory, Australia.

We use the Daly River catchment in the Northern Territory (Figure 1) to illustrate cross-realm planning concepts. Many of the catchment's conservation values are related to riparian zones, aquatic systems (e.g., rivers, floodplain wetlands, springs, estuary), and the biodiversity they support. The land and water systems of the Daly also sustain important cultural, spiritual, and socioeconomic activities for indigenous and non-indigenous people (Jackson *et al.* 2012; Stoeckl *et al.* 2013). The catchment is recognized nationally and internationally for its high ecological value. The estuary and lower floodplains meet criteria related to waterbirds for listing as a Ramsar Wetland of International Importance. The river is almost unique in northern Australia in having strong perennial flows, with associated significance for aquatic flora and fauna. The middle and upper parts of the catchment contain national parks and indigenous protected areas. The diversity of ecological and socioeconomic values has led to substantial research effort invested in defining conservation and management priorities for the freshwater systems in the

Daly (Hermoso & Kennard 2012; Hermoso *et al.* 2012; Linke *et al.* 2012b).

Despite existing protection (Figure 1) and relatively low levels of clearing (~5%), native species are threatened by changes in fire regimes, degradation of riparian zones, expanding weed infestations, and invasive animals (Table S1). These threats affect both freshwater and terrestrial ecosystems, so many of our recommended conservation actions are the same for both realms. However, the effects of an individual action could be substantially different for each realm, resulting in different types of action–response curves (Figures 3,4). For example, consider a potential action to reduce grazing. Grazing has been implicated in reduced native vegetation cover and subsequent loss of bird and mammal biodiversity in the Daly River catchment (Franklin *et al.* 2005; Woinarski *et al.* 2011). Reduced grazing will therefore directly benefit terrestrial ecosystems whereas benefits to freshwater ecosystems will be indirect (e.g., reduced sedimentation), accrue over longer periods, and be discernible only for more extensive intervention. Hypothetically, grazing could have a linear benefit-to-effort relationship on land but an exponential one for fresh water (Figure 3B, Figure 4). Importantly, although reducing cattle density in any paddock will generally have a positive environmental impact, it does not necessarily require a direct reduction in profits, for example when reproductive rate increases in a smaller herd (Burns *et al.* 2010). Up to a point, overall productivity can therefore be maintained with lower stocking rates.

Other responses to management actions in the Daly include water control (type 1, Figure 4) and control of introduced cane toads (type 2, Figure 4). The restriction of water extraction in the Daly River (Chan *et al.* 2012; Stoeckl *et al.* 2013) will likely have more immediate benefits to aquatic organisms, for example through increased habitat availability, than to riparian and terrestrial biota for which benefits of the management action might take longer to accrue (Arthington & Pusey 2003; Chan *et al.* 2012). In contrast, the ecological benefits of controlling cane toads might show similarly rapid benefits for species in diverse ecosystems: aquatic (e.g., fish), semiaquatic (e.g., frogs, crocodiles), and terrestrial (e.g., monitors, snakes, birds, and predatory mammals such as quolls). In all cases, control reduces the consumption of poisonous eggs, tadpoles, and adult toads (Shanmuganathan *et al.* 2010).

Our generic assessment (Table 1) and case study (1; Figure 1; Table S1) reveal that most anthropogenic stressors affect both terrestrial and freshwater ecosystems. For example, water extraction for agricultural and

Table 1 Examples of threats to freshwater and terrestrial systems, candidate management actions, and the similarities in management actions across realms. Our classification of threats is expanded from Álvarez-Romero *et al.* (2011) and candidate management actions are expanded from Salafsky *et al.* (2008). For each threat we list the associated stressor¹ and indicate to which realm the stressor applies (freshwater/terrestrial, just freshwater or just terrestrial). For each threat we also provide candidate management actions² and indicate the realm that each action is applicable to. Where a candidate management action is applicable to both terrestrial and freshwater realms we indicate the extent to which each action is similar across realms: *indicates that it is the same action and location for both realms and #indicates that it is the same action but would likely be implemented in a different spatial location for each realm

Threat	Stressor	Candidate management actions
Land use		
Urbanization		
Terrestrial/freshwater	TC, G/SW	*Toxicant interception/mitigation #Land use planning, restoration of habitats
Freshwater	N	Nutrient interception/mitigation
Agriculture		
Terrestrial/freshwater	TC, E	*Toxicant interception/mitigation #Land use planning, restoration of habitats
Freshwater	N, S	Nutrient interception/mitigation, sediment removal
Grazing		
Terrestrial/freshwater	E, S	#Fencing
Terrestrial		Sustainable grazing
Mining		
Terrestrial/freshwater	TC	*Toxicant interception/ mitigation #Restoration of habitat
Freshwater	S	Sediment removal
Forestry		
Terrestrial/freshwater	TC, E	#Restoration of habitat, land use planning
Freshwater	N, S	Nutrient interception/mitigation, sediment removal
Roads and transport corridors		
Terrestrial/freshwater	E, RPS, FV, TC, S	*Toxicant interception/ mitigation #Restoration of habitat, land use planning
Freshwater	FC, N	Restoration of freshwater connectivity
Biological Resource Use		
Hunting		
Terrestrial/freshwater	RPS	*Regulation/enforcement
Fishing of aquatic resources		
Freshwater	RPS	Fisheries regulation/enforcement
Natural system modification		
Fire and fire suppression		
Terrestrial/freshwater	E, NC	*Fire management
Freshwater	S	
Riparian degradation		
Terrestrial/freshwater	N, S, E, NC, WF, SH, HS, OM	*Restoration of habitats, fencing, fire management, weed management
Dams and water use		
Freshwater	FC, WF, GW	Restoration of freshwater connectivity, environmental flow allocations, restrictions on extraction of ground water
Invasive nonnative alien species		
Invasive nonnative plants		
Terrestrial/freshwater	NC	#Weed management
Freshwater	WF	Weed management
Invasive nonnative animals		
Terrestrial/freshwater	E, RPS, FV	#Feral animal control
Climate change		
Sea level rise		
Terrestrial/Freshwater	SA, NC, RPS, FV, FC	*Tidal barrages and levee banks

Continued

Table 1 Continued

Threat	Stressor	Candidate management actions
Altered rainfall regimes		
Terrestrial/freshwater	NC, WF, RPS, FV, E, FC	#Protection of existing refugia
Freshwater		Environmental flow allocations
Altered temperature regimes		
Terrestrial/freshwater	NC, WF, RPS, FV	#Protection of existing refugia

^aStressor codes: TC = toxic chemicals, G/SW = garbage/solid waste, N = nutrients, S = sediment, E = Erosion, NC = changed nutrient cycling and energy transfer, WF = altered water flow, GW = altered ground water surface water connections, RPS = reduced population size, FV = fragmentation of vegetation, FC = fragmentation of aquatic connectivity, SH = loss of shading, HS = loss of coarse wood as habitat structure, OM = loss of allochthonous organic matter, SA = increased salinity

^bManagement activity descriptions: *toxicant interception/mitigation*—activities include installation of mechanical devices to intercept toxic chemicals such as petrochemicals and herbicides and education and enforcement to ensure their appropriate use and disposal; *land use planning*—spatial zoning or planning of land uses to minimize or relocate impacts to realms; *restoration of habitats*—activities such as revegetation to improve habitat quality and quantity; *nutrient interception/mitigation*—activities include construction of artificial wetlands to intercept nutrients and education and enforcement to ensure appropriate use of fertilizers; *sediment removal*—dredging, use of sediment traps and erosion control activities on farms; *fencing*—use of barriers such as fences to prevent stock access to sensitive ecosystems (e.g., riparian zones); *sustainable grazing*—best practice grazing management to minimize ecosystem impacts such as reduced stocking rates, rotating stock or maintaining a percentage vegetation cover through approaches like cell grazing; *restoration of freshwater connectivity*—removal of barriers (i.e., dams, weirs, road culverts and other structures) or installation of fishways (e.g., rockramps, fish ladders/locks/lifts); *regulation/enforcement*—education regarding existing regulations or creation of new policies/regulations and enforcement of these through fines; *fire management*—fire management planning including placement of fire breaks, areas to remove fuel load and approaches to seasonal burning; *environmental flow allocations*—flow restoration by releasing water from dam or restricting extraction or interception of surface water to maintain environmental flows; *restrictions on extraction of ground water*—using regulation such as water allocations or plan to restrict the total amount of ground water extracted; *weed management*—chemical application, biocontrol or manual removal; *feral animal control*—shooting, poisoning, trapping, biocontrol; *tidal barrages and levee banks*—creation of barriers or infrastructure to inhibit salt water intrusion; *protection of existing refugia*—identification and protection through reserves of climatic refugia for sensitive species.

domestic use (altering groundwater and surface hydrology) directly affects the freshwater realm by altering flow regimes, thereby reducing habitat availability and modifying population dynamics of freshwater species (Chan *et al.* 2012). Secondary terrestrial impacts include lowering water tables with consequent death of trees. Another example is the loss of habitat for terrestrial species (e.g., birds, mammals) caused by clearing of native vegetation for agriculture. Secondary impacts on freshwater ecosystems caused by alteration of rainfall-runoff and sediment dynamics include changes to river channel morphology and declines in fish habitat availability and quality (Wood & Armitage 1997). Consequently, many actions to mitigate stressors generate at least some co-benefits.

Figure 2 illustrates the relative magnitudes of benefits for freshwater, riparian, and terrestrial ecosystems for a range of candidate actions in the Daly River catchment (based on expert opinion and peer-reviewed literature). Stressors specific to freshwater (from Table 1) can be mitigated by actions in both realms, but benefits are predominantly to freshwater ecosystems with only marginal terrestrial benefits. For example, interception of sediments and nutrients from terrestrial runoff would occur in the terrestrial realm and benefits would mostly accrue in the freshwater realm. In contrast, fire management applied in

the terrestrial realm may have similar benefits across terrestrial and freshwater systems (Rieman *et al.* 2010) but substantially greater benefits to biodiversity and ecosystem processes within the riparian zone, which has been shown to be highly sensitive to fire (Andersen *et al.* 2005). Conservation actions in the riparian zone will often benefit both freshwater and terrestrial realms because riparian zones connect these two realms through ecosystem processes and cross-system threats.

Of the actions in Figure 2, most have potential socioeconomic benefits upstream or downstream of sites where actions are implemented (e.g., downstream water quality for biodiversity and human use and upstream/downstream fishing; Larson *et al.* 2013). The relative magnitude of benefits across realms will vary between regions. For example, accrued benefits for terrestrial and riparian areas from fish passage devices can be substantial in regions where delivery of marine-derived nutrients by anadromous fish, such as salmon, is important (Hocking & Reynolds 2011).

Current progress in integrating planning across realms

Given the extent to which threats propagate across realms it is likely that cross-realm planning can deliver

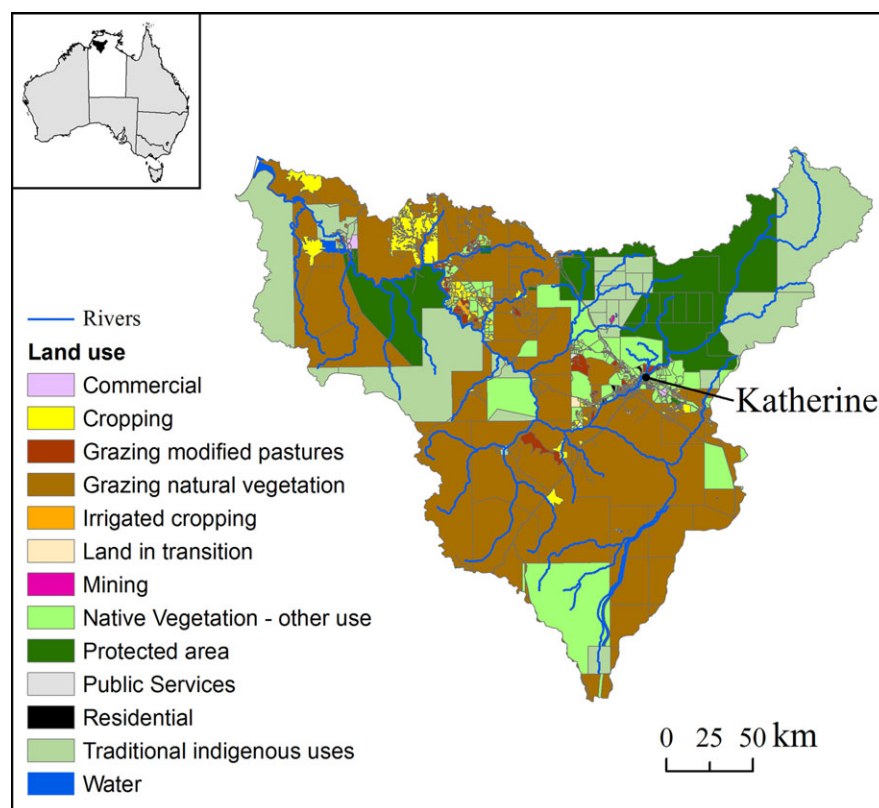


Figure 1 The Daly River catchment. The catchment extends over approximately 5.2 million ha, from the coastline south-west of Darwin to 250 km inland. The inset panel shows the Northern Territory in white and the catchment in black. Land uses (ABARES 2010) and streams are shown in the main map. Approximately 10% of the catchment is covered by national parks, such as Nitmiluk Gorge in the northeast, and Indigenous protected areas, such as Fish River in the northwest.

considerable benefits in terms of cost-efficiency and effectiveness. Our review of published conservation planning exercises that consider multiple realms revealed two sets of studies: 16 discussing theoretical principles or proposing frameworks and methods; and 48 applied studies, most of which concern marine-terrestrial links (Table S2). The key elements of these studies are synthesized in Table 2 and discussed below.

Advances in conservation planning theory and tools have guided siting of specific actions (e.g., reservation, restoration, natural resource management) in different realms (Ball *et al.* 2009; Watts *et al.* 2009). However, no study has optimized objectives for multiple realms. Furthermore, objectives for species or features occurring across realms are rarely considered. Approaches to integrating across realms have relied predominantly on delineation of study regions (e.g., using catchments as planning domains) and planning units that relate to ecological connections (e.g., subcatchments to facilitate consideration of downstream effects).

The most common form of integration considers cross-system threats to locate conservation areas in lower-risk regions (e.g., Linke *et al.* 2012a; Tallis *et al.* 2008). Similarly, many freshwater plans prioritize aquatic systems with higher ecological integrity, commonly assessed in relation to land uses in surrounding subcatchments (e.g., Esselman & Allan 2011; Moilanen *et al.* 2011; Esselman *et al.* 2013). Another approach considers links mediated by the movement of species between realms. For instance, Hazlitt *et al.* (2010) showed that considering the links to potential marine foraging habitats of the marbled murrelet's terrestrial nesting habitat influenced siting of terrestrial reserves. Klein *et al.* (2010, 2012) considered the benefits of land-based actions to protect coral reefs, but they did not target terrestrial and marine conservation features simultaneously. The closest to a spatially explicit integrated conservation plan is the approach by Klein *et al.* (in press) who evaluated the effect of terrestrial protected areas on the condition of coral reefs while also considering the contribution of terrestrial protected areas to national representative targets. Common to all

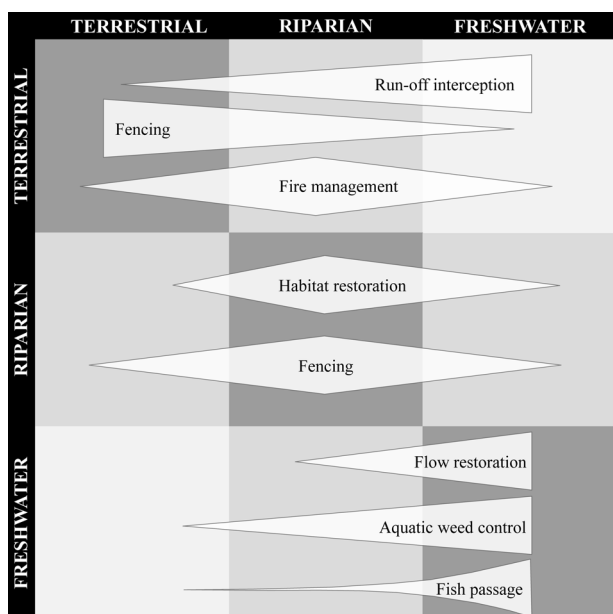


Figure 2 Examples of conservation actions and the propagation of benefits across terrestrial and freshwater realms. We consider the riparian zone as an interface between both realms where actions can be implemented and benefits accrued. Rows indicate where the action occurs and columns indicate where benefits are accrued. The relative height of polygons indicates the relative magnitude of benefits in the three types of ecosystem.

examples above is that a cross-realm perspective located actions differently to analyses that considered realms independently.

Another approach is to target conservation features across realms to explicitly conserve features in multiple connected realms. This is different to the approaches outlined above, which consider ecological processes that link realms. For example, Amis *et al.* (2009) proposed a two-step protocol: first, determine the irreplaceability of areas for freshwater conservation, then use these data as an inverse “cost” input in the prioritization of terrestrial conservation areas, thus preferentially selecting areas where freshwater and terrestrial priorities coincide. Thieme *et al.* (2007) locked the terrestrial reserve system into a solution for freshwater conservation priorities to achieve conservation objectives across realms. However, in these examples, the integration is not done simultaneously but after an initial single-realm assessment is complete, which does not allow for optimal allocation of actions in connected systems.

Two studies from the grey literature exemplify attempts to simultaneously prioritize terrestrial and freshwater conservation areas (TNC 2005; Vander Schaaf *et al.* 2006). Both planning exercises used “vertical integration or stacking,” whereby two sets of planning

units are used simultaneously. Overlapping terrestrial and freshwater planning units are considered adjacent, with the link between them measured by their areal overlap. This allows a combined optimization that targets features in both realms while maximizing compactness based on adjacency within and between realms. Nonetheless, this method does not account for ecological (as opposed to areal) connectivity between terrestrial and freshwater planning units, and does not consider the potential cross-realm effects of implementing actions.

Our review draws attention to a number of practical, methodological, and theoretical limitations that have hindered past approaches to cross-realm planning. First, most studies have addressed integration partially by targeting features associated with two or more realms (e.g., diadromous fish) or by recognizing the propagation of threats across realms (e.g., land-based threats in freshwater planning). Those studies that have optimized the selection of conservation areas for more than one realm simultaneously have failed to represent ecological connections between realms and to identify the relevant actions required to address the threats across realms. In previous cross-realm planning examples, costs have been considered implicitly, by minimizing boundaries between terrestrial and marine reserves, or by considering the costs of protecting terrestrial areas to improve marine areas. Most importantly, integration studies have so far ignored the cobenefits and tradeoffs between actions across multiple realms.

A conceptual framework for cross-realm planning: linking actions to outcomes in multiple realms

Understanding how different actions could benefit multiple realms is only the first step in cross-realm planning. The critical next step is parameterizing cross-realm cobenefits (or tradeoffs) from actions. This requires constructing what we define here as an action-response curve (hereafter, *response curve*), which represents the relationship between (1) the effort allocated to an action and (2) the magnitude of the outcomes (benefits or adverse responses) across realms. Ideally, response curves would be based on local measurements of responses; however, as this is unlikely to be feasible in many regions, models could be parameterized using data from a range of systems to evaluate the potential shape and magnitude of responses. Understanding the response curve for a specific action across realms reveals the potential cobenefits or tradeoffs in conservation outcomes, and in a single realm, response curves indicate what level of effort is needed to achieve a desired benefit (e.g., Murdoch

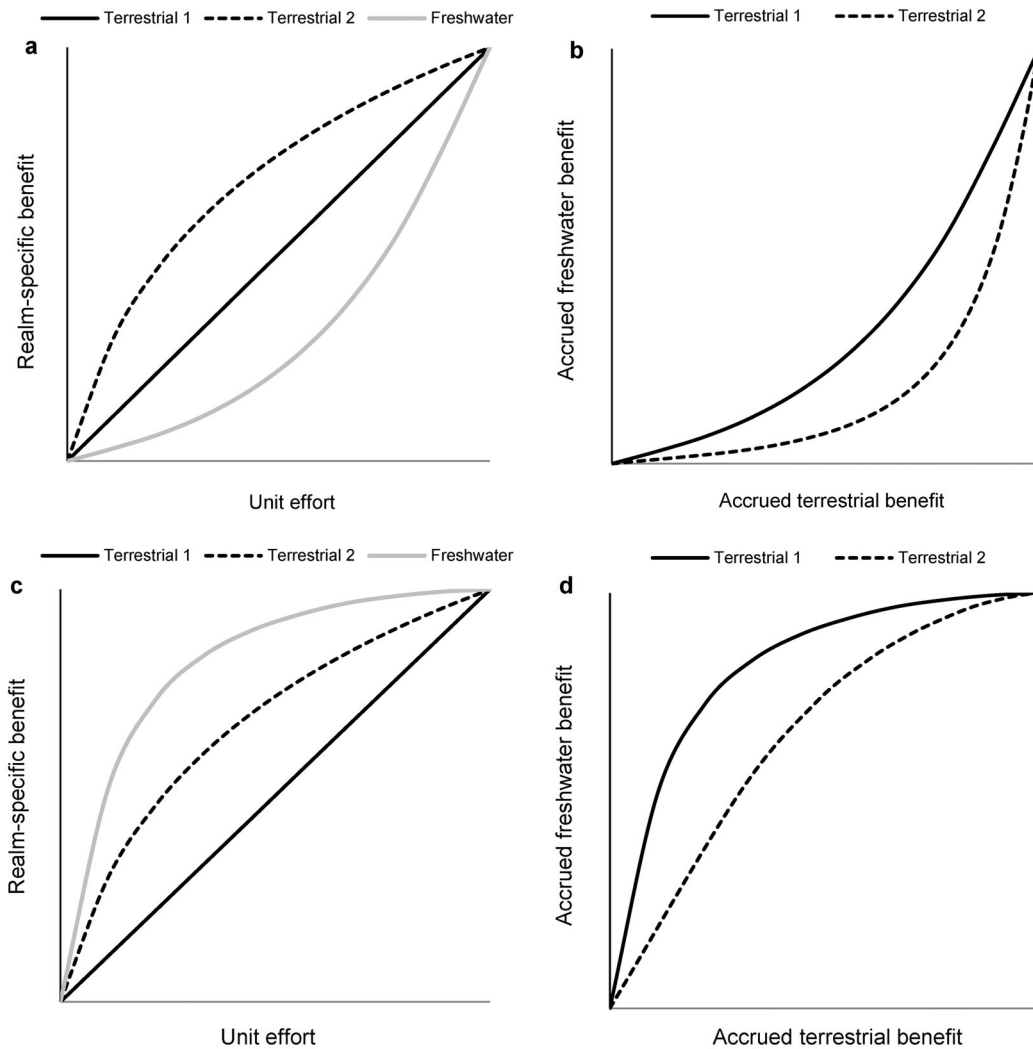


Figure 3 Examples of response curves. The first column shows typical response curves. These indicate the incremental benefits (e.g., number of viable or safeguarded species/populations/ecosystems) corresponding to per-unit increments of effort (e.g., area managed, number of years managed) for two actions with variable terrestrial benefits (“1” and “2”) and equal freshwater benefits. The second column shows the accrued benefit associated with each action (“1” and “2”) for freshwater versus terrestrial realms. (A) The incremental benefits for two actions with variable terrestrial benefits (“1” = linear response and “2” = logarithmic response) and equal freshwater benefits (exponential). (B) For the same two actions as in (A), the accrued benefit associated with each action (“1” and “2”) for freshwater versus terrestrial realms (type 3 relationship, Figure 4). (C) The incremental benefits for two actions with variable terrestrial benefits (“1” = linear response and “2” = logarithmic response) and equal freshwater benefits (logarithmic with higher per-unit benefits than Terrestrial 2). (D) For the same two actions as in (C), the accrued benefit associated with each action (“1” and “2”) for freshwater versus terrestrial realms (type 1 relationship, Figure 4). In both cases (B and D) we observe cobenefits, where accrued benefits for the terrestrial realm will be higher if action 2 is implemented, but freshwater benefits will be notably higher at medium and high levels of effort for (B) compared to rapidly accrued freshwater benefits for low levels of effort for (D).

et al. 2007). We extend this concept, noting that, for multiple realms, response curves can indicate what benefits in one realm might also translate into additional benefits in another realm for a given level of effort. Effort can be defined in terms of the extent of areas being managed, the amount of money being invested, the number of years for which an action is undertaken, or other spatial or tempo-

ral variables. Although the exact shape of response curves is likely to be sensitive to changes in the way in which effort is measured, we assume that the general shape (i.e., showing cobenefits or tradeoffs) is robust across specifications.

Consider two hypothetical actions that provide equal freshwater benefits but variable terrestrial benefits

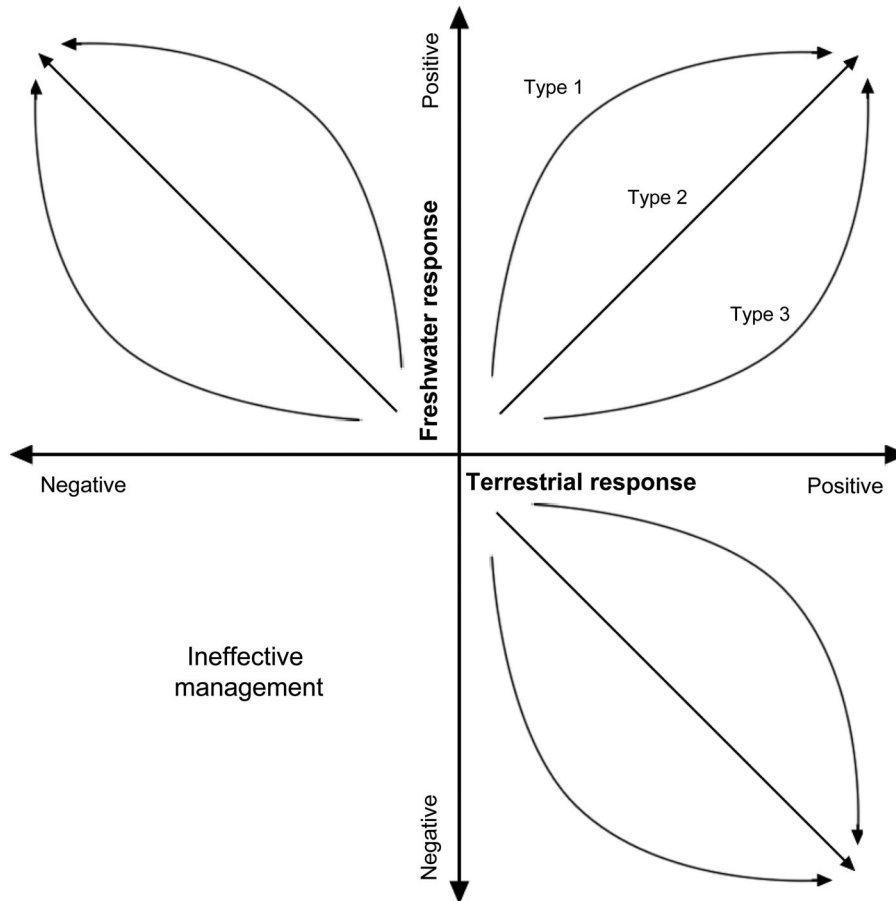


Figure 4 Examples of curves describing actions targeting one realm that provide cobenefits with (top right) or involve tradeoffs between (top left and bottom right) responses in the other realm. An action is ineffective if it has negative responses in both terrestrial and freshwater realms. The shapes of the curves denote variation in the magnitude of responses to different levels of effort for a given management action. Type 1 = the response to a management action increases faster in the freshwater realm than in the terrestrial realm; Type 2 = the response to a management action increases at the same rate in the freshwater realm as in the terrestrial realm; Type 3 = the response to a management action increases faster in the terrestrial realm than in the freshwater realm.

(Figure 3A). These curves show that the benefit (e.g., number of viable populations) per unit effort from two actions differs across realms. In this example, response curves are shown as linear (action 1) or logarithmic (action 2) for terrestrial species and exponential for freshwater species. If we then plot the accrued benefit to each realm for increasing levels of effort, this reveals the relationship between the terrestrial and freshwater response curves (Figure 3B). In this case, both actions have benefits in both realms (i.e., cobenefits) but benefits accrue faster for the terrestrial realm. Given the uniform freshwater response to both actions (Figure 3A), a planner can optimize outcomes across realms by implementing action 2 because it maximizes terrestrial benefits. Other forms of response curves (Figure 3C)

and relationships between freshwater and terrestrial accrued benefits (Figure 3D) are likely. Once measured, response curves can be interpreted by planners to explore the potential outcomes and cost-efficiencies of candidate actions at different levels of effort across realms.

Responses to a given action can be: positive in both realms; positive in one realm and negligible (either positive or negative) in the other; or positive in one realm, but negative in the other. Therefore, response curves could reveal either cobenefits or tradeoffs (Figure 4), and will take on a variety of shapes depending on the context in which the action is applied.

For cobenefit outcomes we show three types of curves (Figure 4, top right), focusing only on environmental

Table 2 Key elements of planning exercises considering cross-realm integration and examples of the range of approaches used in their application. This table extends the study by Álvarez-Romero et al. (2011) by adding 22 studies (mostly regarding terrestrial–freshwater integration, plus some recent terrestrial–marine applications). Further detail is available in Supplementary Table 2

Key element	Combinations of realms		
	Terrestrial–freshwater (16)	Marine–terrestrial (22)	Terrestrial–freshwater–marine (10)
Objectives/targeted features	Focus on freshwater-dependent biodiversity (macroinvertebrates, fish, turtles, waterbirds), ecosystem types (rivers, lakes, wetlands) or refugia. Some studies targeted terrestrial biodiversity (vegetation types, species) or had a terrestrial focus using catchments as the spatial context.	Focus on marine biodiversity, although some studies targeted terrestrial biodiversity, nesting habitats for seabirds, intertidal ecosystems, and adjacent features in the littoral zone. More typical targets included nearshore coastal areas (bays and estuaries, coastal buffers), diadromous and estuarine species, marine ecosystems, water quality regimes, marine/terrestrial habitat for marine species, and coral reefs.	Commonly, objectives were independently set for terrestrial, freshwater and marine biodiversity. Some planning exercises also targeted estuaries and rivers, diadromous species, waterbirds, and coastal species and ecosystems.
Planning domain	Commonly used drainage basins, but some studies used management units (e.g., water management areas) or political boundaries (e.g., provinces)—sometimes aligned to ecogeographic regions and catchments.	Commonly ecoregional boundaries (terrestrial and marine), but some studies used management or political boundaries. Additional criteria were intertidal zones/coastal interfaces and habitats (coastal forests, mangroves, reefs, estuaries), national parks, bathymetry, and nesting and marine feeding areas of seabirds.	A combination of the previous two integration approaches, commonly based on ecoregional boundaries, catchments, and bathymetry.
Planning units	Mostly freshwater: subcatchments, stream/river reaches, but some studies also included terrestrial units (hexagons).	Commonly uniform units (hexagons, squares) across marine or both realms, but sometimes different sizes in each realm). Other units included: linear units along the land-sea interface, bays and estuaries (delimited by catchment boundaries), subcatchments, habitats (coral reefs), and combinations thereof.	Similar to terrestrial/marine plans: mostly uniform units (hexagons) or linear units for the land-sea interface. Freshwater parts of study domains were subdivided into subcatchments or streams/reaches.
Ecological processes and interactions	Not considered in some studies, and implicit in others (e.g., incidental buffering of wetlands through terrestrial protection). Explicit coverage included: movements of waterbirds and turtles across catchments (not restricted to waterways), longitudinal connectivity along waterways relevant for terrestrial species, and estuaries identified as priorities for catchment-estuarine processes.	Not considered in some studies. Otherwise, targeting species and oceanographic processes relevant to delivery of marine-derived nutrients to terrestrial ecosystems (e.g., salmon runs, seabirds), maintenance of nutrient/sediment input to coastal ecosystems through rivers, targeting interface habitats (e.g., wetlands, mangroves), nesting areas, terrestrial and marine habitats of species, targeting upper catchment to maintain water quality, and use of streams as corridors.	Targeting diadromous species to maintain links between realms (e.g., salmon runs delivering nutrients to freshwater ecosystems directly and influencing riparian vegetation) and interface habitats (e.g., mangroves, estuaries).

Continued

Table 2 Continued

Key element	Combinations of realms		
	Terrestrial—freshwater (16)	Marine—terrestrial (22)	Terrestrial—freshwater—marine (10)
Cross-system threats	Where spatially explicit (not in all studies): land use as a surrogate for ecological integrity/condition (based on surrounding catchment land use, population density, roads, agriculture, grazing, fires, weeds), point sources of pollution, and scheduling of conservation actions (including freshwater features) based on vulnerability (including land-based threats).	Considered indirectly in some studies as presence of urban areas, roads and industry as proxies for socioeconomic cost of conservation. Where spatially explicit: land use to assess integrity of interface, land-based threats used to prioritize conservation areas, avoidance of land-based threats (e.g., aquaculture, nutrient and organic runoff) or assessment of habitat (e.g., coral reefs) condition using river plume models.	Similar to the previous exercises, plus additional assessments, including dam density and coastal modifications.
Integration approach	Sequential (e.g., freshwater priorities reduced “cost” when selecting terrestrial priorities, or terrestrial reserves identified first, then locked in for freshwater prioritization), areas prioritized if less affected by land-based threat, longitudinal propagation of land-based threats, minimizing selection of high economic values, including inter-subcatchment longitudinal connections in optimization, use of subcatchments to achieve integrity/function and preferentially grouping subcatchments along waterways (as corridors), riparian areas and groundwater recharge zones, aggregating adjacent or overlapping planning units of independent prioritizations.	Simultaneous selection of features across both realms, higher costs of areas adjacent to urban, roads and industry, design criteria (including whole bays, estuaries, coastal catchments, adjacency to conserved and protected terrestrial areas), avoiding imminent land-based threats, maximizing return on investment (ROI) by selecting either land-based or marine-based actions, maximizing coral reef condition by protecting forests, connecting selected conservation areas to include marine processes.	Integration of terrestrial and freshwater conservation areas by using different units but quantifying adjacency based on areal overlap, sequential selection (e.g., marine sites added to include areas where high-priority terrestrial and marine sites are ecologically connected), concurrent and post hoc integration, design criteria used by experts to delineate priority conservation areas (e.g., select areas with better water quality and adjacent to well-preserved forested areas).
Actions with cross-realm effects	Not considered in most studies. Some studies considered only generic protection. A few land-based actions included reducing direct livestock access to waterways, restoring riparian vegetation cover to increase shading and to reduce sediment and nutrient inputs, use of 5 m riparian protection zones or setbacks either side of all streams.	Not considered in most studies. Protection of forests to avoid nutrient/sediment runoff, protecting marine habitat to ensure viability of species occupying both realms or to maintain input of marine-derived nutrients to terrestrial systems.	Not considered in most studies. Similar to the previous two approaches.

benefits for simplicity, although the concepts could translate easily to socioeconomic benefits. For type 1 curves, benefits accrue faster for freshwater than terrestrial realms; for type 2, benefits accrue at the same rate for both realms; and, for type 3, benefits accrue faster for terrestrial than freshwater realms.

An example of a type 1 response is the restoration of a river channel through reduced erosion, which will likely have more immediate benefits for aquatic than terrestrial organisms (Wood & Armitage 1997). The ecological benefits of controlling some invasive species (e.g., controlling weeds that impact riparian zones such as *Andropogon gayanus*, Petty *et al.* 2012) could have comparable benefits in the freshwater and terrestrial realms (type 2 response) via restoring the structure and composition of riparian biota, thus maintaining natural nutrient cycling and fire regimes. A type 3 response would be improved fire management with benefits to the terrestrial realm (e.g., maintenance of ecosystem processes within the riparian zone, which has been shown to be highly sensitive to fire) accruing faster than for freshwater (e.g., decreased inputs of sediments and nutrients associated with erosion of burned areas). Further examples of potential cobenefit outcomes are provided in Box 1 regarding our case study.

Challenges to planning and implementing conservation actions across terrestrial and freshwater realms

The main challenges to planning across freshwater and terrestrial realms include a lack of critical information concerning ecological linkages, benefits, off-site effects, and cost-effectiveness of different actions across realms. In addition, practical challenges to implementing actions can arise because of a historical tendency to manage these two realms separately.

Cross-realm planning cannot be achieved without spatially explicit data on the linkages between realms, including the origin, extent, and magnitude of cross-system threats and ecological interdependencies. Furthermore, an understanding of these threats should be accompanied by a description of how the systems respond both to the threat and management action to mitigate the threat (benefits).

Benefits of actions can be measured in terms of changes in probabilities of persistence (e.g., Carwardine *et al.* 2011), population sizes, or changes in extent or “condition” of features in each realm. Benefits can be either estimated directly (e.g., through experimental or observational data on species/ecosystem responses to threats and actions to mitigate these threats) or by expert knowledge

if empirical data are lacking. However, as benefits are likely to be context dependent, estimation is a nontrivial exercise. For example, if several areas are connected physically or biologically, then implementation of an action could result in off-site benefits that result in a total benefit much greater than if the action were implemented in places with less connectivity (Hermoso *et al.* 2012). Long-term monitoring and evaluation of management actions can provide data on ecological responses, but both activities need to occur across realms to detect potential benefits accrued beyond the realm in which actions are undertaken directly.

Ideally, full response curves will be parameterized, allowing for explicit consideration of what objectives can be achieved under different levels of effort or constrained budgets. At a minimum, both costs and benefits should be estimated for a single point on a response curve for each realm which would allow integrated planning for one level of effort (Figure 3).

Developing response curves requires information about conservation costs (typically categorized as acquisition, management, transaction, damage, and opportunity costs). Like estimates of benefits, estimates of the financial cost of “an action” might seem easy, but context also complicates the estimation process. For example, there might be economies of scale, meaning that it can be cheaper to apply an action across a larger area than a smaller one (Adams *et al.* 2012). Similarly, if dealing with on-farm conservation activities, the costs of applying a particular action are likely to depend, interactively, on other (market-focused) activities on the farm, producing synergies between production and conservation outcomes (e.g., Peerlings Polman 2004). Adams *et al.* (2012) showed the coincidence between threats to land production and threats to natural values in the Daly River catchment, and hence the extent to which land management and conservation activities have cobenefits. For example, fire management has direct financial benefits to graziers and other agriculturalists (Ross *et al.* 2011) and can also deliver social and environmental benefits (Fitzsimons *et al.* 2012). Likewise, many weeds cause significant productivity problems, so their control is often welcomed by agriculturalists (Sinden *et al.* 2004; Pimentel *et al.* 2005). Fish passages are likely to benefit recreational and traditional fishers, with possible knock-on benefits for tourism (Carson & Schmallegger 2009).

One way of dealing with complex cobenefits or tradeoffs is to estimate complex cost functions that, in essence, net out other socioeconomic impacts when estimating the cost of specific actions; another approach would be to treat the socioeconomic system as another realm—extending our proposed response curves to incorporate additional side-effects of actions, or to consider other

types of actions. This would, for example, make explicit the effects of controlling feral animals (e.g., pigs, water buffalo) to benefit many aquatic and terrestrial species, but also potentially detracting from indigenous livelihoods (for which these species can be an important food source; Robinson & Wallington 2012).

An estimate for a single point on the response curve can be used in existing systematic conservation software, such as Marxan with Zones (Watts *et al.* 2009) or Zonation (Moilanen *et al.* 2011) to provide potential sets of priority actions in planning units that most cost-efficiently achieve benefits to conservation features. Unfortunately, existing software cannot currently take advantage of continuous benefit functions (response curves), so purpose-built optimization tools are needed. These tools should not only be able to use those continuous functions, but also integrate interactions between management actions (additive, synergistic, or antagonistic) in a spatially explicit context to better account for connectivity requirements. Uncertainties around the response curves could also be characterized (e.g., using methods detailed by Speirs-Bridge *et al.* 2010) and sensitivity analyses undertaken to assess the reliability of planning outputs and the potential implications of different conservation decisions based on limited data (Burgman *et al.* 2005; Regan *et al.* 2005).

A better scientific understanding of cross-realm planning will ensure limited conservation budgets are allocated more efficiently only if managers and policy makers can reduce the compartmentalization of planning and actions within realms. Current constraints imposed by highly specified funding streams and reporting requirements for single-realm conservation (e.g., revegetation, fire management, or feral animal control programs exclusively targeting terrestrial ecosystems) will need to be overcome to realize the substantial benefits to be gained from conservation across realms. This could be facilitated partly by enhanced collaboration among natural resource management agencies that are commonly isolated (e.g., fisheries, water management, environment), by supporting catchment management authorities to explicitly design actions across realms, and by providing dedicated funding streams for cross-realm planning (e.g., integrated catchment management). There are promising signs in this direction. One example is the series of water quality improvement plans by catchment management bodies in the drainages of the Great Barrier Reef (Australia), now beginning to reduce sediment and nutrients flowing into the Reef's lagoon (Brodie & Waterhouse 2012). Another example is the Cedar River Municipal Watershed Aquatic Restoration Plan (U.S.A.), which identifies areas where cobenefits of restoration actions can be obtained for aquatic, riparian, and terrestrial ecosystems (Bohle

et al. 2008). However, better planning is needed to integrate actions that address objectives other than water quality and to explore cobenefits and tradeoffs related to ecosystem services (e.g., carbon retention and sequestration). Furthermore, natural resource managers need best-practice guidance on the potential benefits of commonly implemented management actions, such as weed and fire control, for multiple realms and how these might be applied to more effectively achieve multiple objectives across realms.

Conclusions

Existing examples of cross-realm planning have not explicitly estimated the potential benefits of actions to multiple realms. We have identified three key technical steps toward planning more effectively and efficiently across realms:

1. Qualitatively assess the existing threats to each realm, the actions to mitigate those threats, and the extent to which these threats and actions are similar or dissimilar and propagate their effects across realms;
2. Construct action–response curves for actions under consideration, related to explicit objectives. If data are not available to develop whole curves, it will be necessary to identify at least one point on each curve related to a specific level of response;
3. Use existing or purpose-built software to optimize the allocation of actions spatially, according to the distribution of threats, conservation features, and the expected cobenefits or tradeoffs accruing to each realm based on the response curves, considering also socioeconomic costs and benefits, if possible.

Crucially, the conservation benefits arising from these technical advances will be realized only if governance arrangements are also made more amenable to cross-realm planning. Approaches are being developed to review the adequacy of governance against broad environmental outcomes (e.g., Dale *et al.* 2013) and these can be adapted to planning across realms; but some broad requirements are already obvious. One is to strengthen collaborations among agencies and funding streams currently tasked with realm-specific management, identifying and removing constraints on effective cross-realm operations. A second is to maintain the financial support to organizations such as catchment management authorities that were established explicitly for cross-realm planning, building sustained capacity within these groups to use, adapt, and help design technical methods for integrating terrestrial and freshwater actions. A third requirement is to adapt existing institutions or build new ones to

manage the equitable sharing of the benefits and costs (environmental, financial, and social) of cross-realm planning, recognizing that actions applied in one place, possibly requiring extractive activities to be curtailed, will often yield benefits in different places.

We know that realms are linked physically, biologically, socially, and economically, and that actions in one realm invariably affect others. Until we are better at accounting for interactions across realms, our planning and conservation actions will be less cost-effective than they could be. Data deficiencies will clearly prevent the construction of accurate models of cross-realm interactions in the short term, but progress can be made with the technical steps above. Following these steps will make explicit the assumptions and understanding that are presently implicit or absent, and the resulting models will have heuristic value through being scrutinized and challenged. Ultimately, success will depend on adapting governance structures, and this will require high-level commitment to integrated management, adequate funding, and reform of sometimes entrenched power structures.

Acknowledgments

This research was conducted with the support of funding from the Australian Government's National Environmental Research Program (NERP), the Griffith University–James Cook University collaborative grant scheme, and the Australian Research Council (Discovery Grant No. DP120103353). SL was supported by ARC DECRA DE130100565. VMA, JGAR and RLP acknowledge support of the ACEAS working group "Integrated catchment-to-coast planning: data, decision support, and governance". JGAR and RLP also acknowledge the support of the ARC Centre of Excellence for Coral Reef Studies.

Supporting Information

Additional Supporting Information may be found in the online version of this article at the publisher's web site:

Table S1 Threats to freshwater and terrestrial systems in the Daly River Catchment. For each threat (based on Álvarez-Romero et al. (2011)) we discuss the extent to which this threat exists in the Daly catchment and the potential conservation management actions available to mitigate each threat. See Figure 1 for spatial distribution of current land uses

Table S2. Conservation planning applications that considered integration across realms (updated from Álvarez-Romero et al. 2011)

References

- ABARES. (2010) *Catchment scale land use of Australia—Update March 2010*. Australian Bureau of Agricultural and Resource Economics and Sciences (ABARES), Canberra.
- Adams, V.M., Pressey, R.L. & Stoeckl, N. (2012) Estimating land and conservation management costs: the first step in designing a stewardship program for the Northern Territory. *Biol. Conserv.*, **148**, 44–53.
- Álvarez-Romero, J.G., Pressey, R.L., Ban, N.C. et al. (2011) Integrated land-sea conservation planning: the missing links. *Annu. Rev. Ecol. Evol. Syst.* **42**, 381–409.
- Amis, M.A., Rouget, M., Lotter, M. & Day, J. (2009) Integrating freshwater and terrestrial priorities in conservation planning. *Biol. Conserv.* **142**, 2217–2226.
- Andersen, A.N., Cook, G.D., Corbett, L.K. et al. (2005) Fire frequency and biodiversity conservation in Australian tropical savannas: implications from the Kapalga fire experiment. *Austral Ecol.* **30**, 155–167.
- Arthington, A.H. & Pusey, B.J. (2003) Flow restoration and protection in Australian rivers. *River Res. Appl.* **19**, 377–395.
- Ball, I.R., Watts, M.E. & Possingham, H.P. (2009) Marxan and relatives: Software for spatial conservation prioritisation. In A. Moilanen, K.A. Wilson, H.P. Possingham editors. *Spatial conservation prioritization: quantitative methods and computational tools*. Oxford University Press, New York City.
- Beger, M., Grantham, H.S., Pressey, R.L. et al. (2010) Conservation planning for connectivity across marine, freshwater, and terrestrial realms. *Biol. Conserv.* **143**, 565–575.
- Bohle, T., Beedle, D., Barnett, H., Joselyn, M., LaBarge, A. & Lackey, B. (2008) *Cedar river municipal watershed draft aquatic restoration strategic plan*. Aquatic Restoration Inter-Disciplinary Team, Watershed Management Division, Seattle Public Utilities, Seattle, WA.
- Brodie, J. & Waterhouse, J. (2012) A critical review of environmental management of the 'not so Great' Barrier Reef. *Estuar. Coast. Shelf Sci.* **104**, 1–22.
- Burgman, M.A., Lindenmayer, D.B. & Elith, J. (2005) Managing landscapes for conservation under uncertainty. *Ecology* **86**, 2007–2017.
- Burns, B.M., Fordyce, G. & Holroyd, R.G. (2010) A review of factors that impact on the capacity of beef cattle females to conceive, maintain a pregnancy and wean a calf—implications for reproductive efficiency in northern Australia. *Anim. Reprod. Sci.* **122**, 1–22.
- Carson, D. & Schmallegger, D. (2009) Fishing the big rivers in Australia's Northern Territory: market diversification for the Daly River. *River tourism (eds Prideaux, B and Cooper, M)*. CABI, Oxfordshire, 131–146.
- Carwardine, J., O'Connor, T., Legge, S., Mackey, B., Possingham, H.P. & Martin, T.G. (2011) *Priority threat management to protect Kimberley wildlife*. CSIRO Ecosystem Sciences, Brisbane. Available at: www.csiro.au/files/pzk8.pdf

- Carwardine, J., Wilson, K.A., Watts, M., Etter, A., Klein, C.J. & Possingham, H.P. (2008) Avoiding costly conservation mistakes: the importance of defining actions and costs in spatial priority setting. *PLoS One* **3**, e2586.
- Chan, T.U., Hart, B.T., Kennard, M.J. *et al.* (2012) Bayesian network models for environmental flow decision making in the Daly River, Northern Territory, Australia. *River Res. Appl.* **28**, 283-301.
- Dale, A., Vella, K., Pressey, R.L., Brodie, J., Yorkston, H. & Potts, R. (2013) A method for risk analysis across governance systems: a Great Barrier Reef case study. *Environ. Res. Lett.* **8**, 015037, doi:10.1088/1748-9326/8/1/015037.
- Ernst, K.A. & Brooks, J.R. (2003) Prolonged flooding decreased stem density, tree size and shifted composition towards clonal species in a central Florida hardwood swamp. *For. Ecol. Manage.* **173**, 261-279.
- Esselman, P.C. & Allan, J.D. (2011) Application of species distribution models and conservation planning software to the design of a reserve network for the riverine fishes of northeastern Mesoamerica. *Freshwater Biol.* **56**, 71-88.
- Esselman, P.C., Edgar, M., Breck, J., Hay-Chmielewski, E.M. & Wang, L. (2013) Riverine connectivity, upstream influences, and multi-taxa representation in a conservation area network for the fishes of Michigan, USA. *Aquat. Conserv.: Marine Freshwater Ecosyst.* **23**, 7-22.
- Fitzsimons, J., Russell-Smith, J., James, G. *et al.* (2012) Insights into the biodiversity and social benchmarking components of the Northern Australian fire management and carbon abatement programmes. *Ecol. Manage. Restor.* **13**, 51-57.
- Franklin, D.C., Whitehead, P.J., Pardon, G., Matthews, J., McMahon, P. & McIntyre, D. (2005) Geographic patterns and correlates of the decline of granivorous birds in northern Australia. *Wildlife Res.* **32**, 399-408.
- Hazlitt, S.L., Martin, T.G., Sampson, L. & Arcese, P. (2010) The effects of including marine ecological values in terrestrial reserve planning for a forest-nesting seabird. *Biol. Conserv.* **143**, 1299-1303.
- Hermoso, V. & Kennard, M.J. (2012) Uncertainty in coarse conservation assessments hinders the efficient achievement of conservation goals. *Biol. Conserv.* **147**, 52-59.
- Hermoso, V., Kennard, M.J. & Linke, S. (2012) Integrating multidirectional connectivity requirements in systematic conservation planning for freshwater systems. *Divers. Distrib.* **18**, 448-458.
- Hocking, M.D. & Reynolds, J.D. (2011) Impacts of salmon on riparian plant diversity. *Science* **331**, 1609-1612.
- Jackson, S., Finn, M. & Featherston, P. (2012) Aquatic resource use by Indigenous Australians in two tropical river catchments: the Fitzroy River and Daly River. *Hum. Ecol.* **40**, 893-908.
- Kirkpatrick, J.B. (1983) An iterative method for establishing priorities for the selection of nature reserves: an example from Tasmania. *Biol. Conserv.* **25**, 127-134.
- Klein, C.J., Ban, N.C., Halpern, B.S. *et al.* (2010) Prioritizing land and sea conservation investments to protect coral reefs. *PLoS One* **5**, e12431.
- Klein, C.J., Jupiter, S.D., Selig, E.R. *et al.* (2012) Forest conservation delivers highly variable coral reef conservation outcomes. *Ecol. Appl.* **22**, 1246-1256.
- Klein, C.J., Jupiter, S.D., Watts, M. & Possingham, H.P. (2014) Evaluating the influence of candidate terrestrial protected areas on coral reef condition in Fiji. *Mar. Policy* **44**, 360-365.
- Larson, S., Stoeckl, N., Neil, B. & Welters, R. (2013) Using resident perceptions of values associated with the Australian tropical rivers to identify policy and management priorities. *Ecol. Econ.* **94**, 9-18.
- Leslie, H.M. (2005) Synthesis of marine conservation planning approaches. *Conserv. Biol.* **19**, 1701-1713.
- Linke, S., Kennard, M.J., Hermoso, V., Olden, J.D., Stein, J. & Pusey, B.J. (2012a) Merging connectivity rules and large-scale condition assessment improves conservation adequacy in river systems. *J. Appl. Ecol.* **49**, 1036-1045.
- Linke, S., Kennard, M.J., Hermoso, V., Olden, J.D., Stein, J. & Pusey, B.J. (2012b) Merging connectivity rules and large-scale condition assessment improves conservation adequacy in river systems. *J. Appl. Ecol.* **49**, 1036-1045.
- Linke, S., Turak, E. & Nel, J. (2011) Freshwater conservation planning: the case for systematic approaches. *Freshwater Biol.* **56**, 6-20.
- Moilanen, A. (2008) Generalized complementarity and mapping of the concepts of systematic conservation planning. *Conserv. Biol.* **22**, 1655-1658.
- Moilanen, A., Leathwick, J.R. & Quinn, J.M. (2011) Spatial prioritization of conservation management. *Conserv. Lett.* **4**, 383-393.
- Murdoch, W., Polasky, S., Wilson, K.A., Possingham, H.P., Kareiva, P. & Shaw, R. (2007) Maximizing return on investment in conservation. *Biol. Conserv.* **139**, 375-388.
- Naiman, R.J. & Decamps, H. (1997) The ecology of interfaces: Riparian zones. *Ann. Rev. Ecol. Syst.* **28**, 621-658.
- Nel, J.L., Reyers, B., Roux, D.J. & Cowling, R.M. (2009) Expanding protected areas beyond their terrestrial comfort zone: identifying spatial options for river conservation. *Biol. Conserv.* **142**, 1605-1616.
- Nel, J.L., Roux, D.J., Maree, G. *et al.* (2007) Rivers in peril inside and outside protected areas: a systematic approach to conservation assessment of river ecosystems. *Divers. Distrib.* **13**, 341-352.
- Peurlings, J. & Polman, N. (2004) Wildlife and landscape services production in Dutch dairy farming: jointness and transaction costs. *Eur. Rev. Agric. Econ.* **31**, 427-449.
- Petty, A.M., Setterfield, S.A., Ferdinands, K.B. & Barrow, P. (2012) Inferring habitat suitability and spread patterns from large-scale distributions of an exotic invasive pasture grass in north Australia. *J. Appl. Ecol.* **49**, 742-752.
- Pimentel, D., Zuniga, R. & Morrison, D. (2005) Update on the environmental and economic costs associated with

- alien-invasive species in the United States. *Ecol. Econ.* **52**, 273-288.
- Pressey, R.L. (2002) The first reserve selection algorithm—a retrospective on Jamie Kirkpatrick's 1983 paper. *Progress Phys. Geogr.* **26**, 434-441.
- Pusey, B.J. & Arthington, A.H. (2003) Importance of the riparian zone to the conservation and management of freshwater fish: a review. *Mar. Freshwater Res.* **54**, 1-16.
- Regan, H.M., Ben-Haim, Y., Langford, B. *et al.* (2005) Robust decision-making under severe uncertainty for conservation management. *Ecol. Appl.* **15**, 1471-1477.
- Reyers, B., O'Farrell, P.J., Nel, J.L., Wilson, K. (2012) Expanding the conservation toolbox: conservation planning of multifunctional landscapes. *Landscape Ecol.* **27**, 1121-1134.
- Rieman, B.E., Hessburg, P.F., Luce, C. & Dare, M.R. (2010) Wildfire and management of forests and native fishes: conflict or opportunity for convergent solutions? *Bioscience* **60**, 460-468.
- Robins, L. (2002) Managing riparian land for multiple uses (RIRDC Publication No: 02/103). Rural Industries Research and Development Corporation <https://rirdc.infoservices.com.au/items/02-103>. Accessed June 2013.
- Robinson, C.J. & Wallington, T.J. (2012) Boundary work: engaging knowledge systems in co-management of feral animals on Indigenous lands. *Ecol. Soc.* **17**, 16.
- Ross, C., Koeckhoven, S., Kaliel, D., Jeffrey, S. & Unterschultz, J. (2011) Watershed evaluation of beneficial management practices: on-farm benefits and costs. Pages 325-329 in E. van Bochove, P.A. Vanrolleghe, G. Chambers, G. Theriault, B. Novotna, M.R. Burkart editors. *Issues and solutions to diffuse pollution: selected papers from the 14th international conference of the IWA diffuse pollution specialist group, DIPCON 2010*. Québec, Québec, Canada.
- Rybicki, M., Winkelmann, C., Hellmann, C., Bartels, P. & Jungmann, D. (2012) Herbicide indirectly reduces physiological condition of a benthic grazer. *Aquat. Biol.* **17**, 153-166.
- Salafsky, N., Salzer, D., Stattersfield, A.J. *et al.* (2008) A standard lexicon for biodiversity conservation: unified classifications of threats and actions. *Conserv. Biol.* **22**, 897-911.
- Sarkar, S., Pressey, R.L., Faith, D.P. *et al.* (2006) Biodiversity conservation planning tools: present status and challenges for the future. *Ann. Rev. Environ. Resour.* **31**, 123-159.
- Shanmuganathan, T., Pallister, J., Doody, S. *et al.* (2010) Biological control of the cane toad in Australia: a review. *Anim. Conserv.* **13**, 16-23.
- Sinden, J., Jones, R., Hester, S. *et al.* (2004) The economic impact of weeds in Australia, Technical Series 8. CRC for Australian Weed Management, Glen Osmond, SA.
- Speirs-Bridge, A., Fidler, F., McBride, M., Flander, L., Cumming, G. & Burgman, M. (2010) Reducing overconfidence in the interval judgments of experts. *Risk Anal.* **30**, 512-523.
- Stoeckl, N., Jackson, S., Pantus, F., Finn, M., Kennard, M.J. & Pusey, B.J. (2013) An integrated assessment of financial, hydrological, ecological and social impacts of 'development' on Indigenous and non-Indigenous people in northern Australia. *Biol. Conserv.* **159**, 214-221.
- Stoms, D.M., Davis, F.W., Anelman, S.J. *et al.* (2005) Integrated coastal reserve planning: making the land-sea connection. *Front. Ecol. Environ.* **3**, 429-436.
- Tallis, H., Ferdana, Z. & Gray, E. (2008) Linking terrestrial and marine conservation planning and threats analysis. *Conserv. Biol.* **22**, 120-130.
- Thieme, M., Lehner, B., Abell, R. *et al.* (2007) Freshwater conservation planning in data-poor areas: an example from a remote Amazonian basin (Madre de Dios River, Peru and Bolivia). *Biol. Conserv.* **135**, 484-501.
- TNC. (2005) *Alaska yukon arctic ecoregional assessment*. The Nature Conservancy of Alaska, Anchorage, AK.
- Vance-Borland, K., Roux, D.J., Nel, J.L. & Pressey, R.L. (2008) From the mountains to the sea: where is freshwater conservation in the SCB agenda. *Conserv. Biol.* **22**, 505-507.
- Vander, S.D., Wilhere, G., Ferdana, Z. *et al.* (2006) *Pacific northwest coast ecoregion assessment*. The Nature Conservancy, Portland, Oregon.
- Watts, M.E., Ball, I., Stewart, R.S. *et al.* (2009) Marxan with Zones—software for optimal conservation-based land-and sea-use zoning. *Environ. Model. Soft.*, 1-9.
- Woinarski, J.C.Z., Legge, S., Fitzsimons, J.A. *et al.* (2011) The disappearing mammal fauna of northern Australia: context, cause, and response. *Conserv. Lett.* **4**, 192-201.
- Wood, P.J. & Armitage, P.D. (1997) Biological effects of fine sediment in the lotic environment. *Environ. Manage.* **21**, 203-217.