

Four Novel Loci (19q13, 6q24, 12q24, and 5q14) Influence the Microcirculation *In Vivo*

M. Kamran Ikram, Sim Xueling, Richard A. Jensen, Mary Frances Cotch, Alex W. Hewitt, M. Arfan Ikram, Jie Jin Wang, Ronald Klein, Barbara E. K. Klein, Monique M. B. Breteler, Ning Cheung, Gerald Liew, Paul Mitchell, Andre G. Uitterlinden, Fernando Rivadeneira, Albert Hofman, Paulus T. V. M. de Jong, Cornelia M. van Duijn, Linda Kao, Ching-Yu Cheng, Albert Vernon Smith, Nicole L. Glazer, Thomas Lumley, Barbara McKnight, Bruce M. Psaty, Fridbert Jonasson, Gudny Eiriksdottir, Thor Aspelund, Global BPgen Consortium, Tamara B. Harris, Lenore J. Launer, Kent D. Taylor, Xiaohui Li, Sudha K. Iyengar, Quansheng Xi, Theru A. Sivakumaran, David A. Mackey, Stuart MacGregor, Nicholas G. Martin, Terri L. Young, Josh C. Bis, Kerri L. Wiggins, Susan R. Heckbert, Christopher J. Hammond, Toby Andrew, Samantha Fahy, John Attia, Elizabeth G. Holliday, Rodney J. Scott, F. M. Amirul Islam, Jerome I. Rotter, Annie K. McAuley, Eric Boerwinkle, E. Shyong Tai, Vilundur Gudnason, David S. Siscovick, Johannes R. Vingerling, Tien Y. Wong

Published: October 28, 2010 • DOI: 10.1371/journal.pgen.1001184

Corrections

19 Nov 2010: Ikram MK, Sim X, Jensen RA, Cotch MF, Hewitt AW, et al. (2010) Correction: Four Novel Loci (19q13, 6q24, 12q24, and 5q14) Influence the Microcirculation *In Vivo*. *PLoS Genet* 6(11): 10.1371/annotation/841bfadf-85d1-4059-894f-2863d73fa963. doi: 10.1371/annotation/841bfadf-85d1-4059-894f-2863d73fa963 | [View correction](#)

Abstract

There is increasing evidence that the microcirculation plays an important role in the pathogenesis of cardiovascular diseases. Changes in retinal vascular caliber reflect early microvascular disease and predict incident cardiovascular events. We performed a genome-wide association study to identify genetic variants associated with retinal vascular caliber. We analyzed data from four population-based discovery cohorts with 15,358 unrelated Caucasian individuals, who are members of the Cohort for Heart and Aging Research in Genomic Epidemiology (CHARGE) consortium, and replicated findings in four independent Caucasian cohorts (n = 6,652). All participants had retinal photography and retinal arteriolar and venular caliber measured from computer software. In the discovery cohorts, 179 single nucleotide polymorphisms (SNP) spread across five loci were significantly associated ($p < 5.0 \times 10^{-8}$) with retinal venular caliber, but none showed association with arteriolar caliber. Collectively, these five loci explain 1.0%–3.2% of the variation in retinal venular caliber. Four out of these five loci were confirmed in independent replication samples. In the combined analyses, the top SNPs at each locus were: rs2287921 (19q13; $p = 1.61 \times 10^{-25}$, within the *RASIP1* locus), rs225717 (6q24; $p = 1.25 \times 10^{-16}$, adjacent to the *VTA1* and *NMBR* loci), rs10774625 (12q24; $p = 2.15 \times 10^{-13}$, in the region of *ATXN2*, *SH2B3* and *PTPN11* loci), and rs17421627 (5q14; $p = 7.32 \times 10^{-16}$, adjacent to the *MEF2C* locus). In two independent samples, locus 12q24 was also associated with coronary heart disease and hypertension. Our population-based genome-wide association study demonstrates four novel loci associated with retinal venular caliber, an endophenotype of the microcirculation associated with clinical cardiovascular disease. These data provide further insights into the contribution and biological mechanisms of microcirculatory changes that underlie cardiovascular disease.

Author Summary

The microcirculation plays an important role in the development of cardiovascular diseases. Retinal vascular caliber changes reflect early microvascular disease and predict incident cardiovascular events. In order to identify genetic variants associated with retinal vascular caliber, we performed a genome-wide association study and analyzed data from four population-based discovery cohorts with 15,358 unrelated Caucasian individuals, who are members of the Cohort for Heart and Aging Research in Genomic Epidemiology (CHARGE) consortium, and replicated findings in four independent Caucasian cohorts (n = 6,652). We found evidence for association of four loci with retinal venular caliber: on chromosomes 19q13 within the *RASIP1* locus, 6q24 adjacent to the *VTA1* and *NMBR* loci, 12q24 in the region of *ATXN2*, *SH2B3* and *PTPN11* loci, and 5q14 adjacent to the *MEF2C* locus. In two independent samples, locus 12q24 was also associated with coronary heart disease and hypertension. In the present study, we demonstrate that four novel loci were associated with retinal venular caliber, an endophenotype of the microcirculation associated with clinical cardiovascular disease. Our findings will help focus research on novel genes and pathways involving the microcirculation and its role in the development of cardiovascular disease.

Figures

Citation: Ikram MK, Xueling S, Jensen RA, Cotch MF, Hewitt AW, et al. (2010) Four Novel Loci (19q13, 6q24, 12q24, and 5q14) Influence the Microcirculation *In Vivo*. *PLoS Genet* 6(10): e1001184. doi:10.1371/journal.pgen.1001184

Editor: Mark I. McCarthy, University of Oxford, United Kingdom

Received: April 26, 2010; **Accepted:** September 28, 2010; **Published:** October 28, 2010

This is an open-access article distributed under the terms of the Creative Commons Public Domain declaration which stipulates that, once placed in the public domain, this work may be freely reproduced, distributed, transmitted, modified, built upon, or otherwise used by anyone for any lawful purpose.

Funding: Age Gene/Environment Susceptibility - Reykjavik Study: Age, Gene/Environment Susceptibility - Reykjavik Study received funding from the Intramural Research Program of the National Institute on Aging (Z01AG007380, NIH contract N01-AG-12100) and the National Eye Institute (Z01EY000401) at the National Institutes of Health, Hjartavernd (the Icelandic Heart Association), and the Althingi (the Icelandic Parliament). Atherosclerosis Risk in Communities Study: The Atherosclerosis Risk in Communities is supported by the National Heart, Lung, and Blood Institute contracts N01-HC-55015, N01-HC-55016, N01-HC-55018, N01-HC-55019, N01-HC-55020, N01-HC-55021, N01-HC-55022, and R01HL087641; National Human Genome Research Institute award U01HG004402; NIH Intramural Research award Z01EY000426 from the National Eye Institute; and National Institutes of Health contract HHSN268200625226C. Infrastructure was partly supported by Grant Number UL1RR025005, a component of the National Institutes of Health and NIH Roadmap for Medical Research. Cardiovascular Health Study: The CHS research reported in this article was supported by contract numbers N01-HC-85079 through N01-HC-85086, N01-HC-35129, N01 HC-15103, N01 HC-55222, N01-HC-75150, N01-HC-45133, grant numbers U01 HL080295 and R01 HL087652 from the National Heart, Lung, and Blood Institute, with additional contribution from the National Institute of Neurological Disorders and Stroke. DNA handling

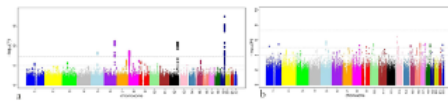


Figure 1. P-values (minus log-transformed) are shown in a signal intensity (Manhattan) plot relative to their genomic position. For (a) retinal venular caliber and (b) retinal arteriolar caliber.
doi:10.1371/journal.pgen.1001184.g001

SNP	Discovery cohorts combined					Replication cohorts individually					Gene	Chrom	Position (kb)	Additional SNPs (p < 10 ⁻⁴)	
	SNP	Chr	Pos (kb)	P-value	MAF	SNP	Chr	Pos (kb)	P-value	MAF					
rs2287921	19	13,120,000	1.1e-08	0.23	rs2287921	19	13,120,000	1.1e-08	0.23	rs2287921	19	13,120,000	1.1e-08	0.23	rs2287921
rs225717	6	24,500,000	1.2e-08	0.15	rs225717	6	24,500,000	1.2e-08	0.15	rs225717	6	24,500,000	1.2e-08	0.15	rs225717
rs10774625	12	24,000,000	7.3e-08	0.15	rs10774625	12	24,000,000	7.3e-08	0.15	rs10774625	12	24,000,000	7.3e-08	0.15	rs10774625
rs17421627	5	14,000,000	7.3e-08	0.15	rs17421627	5	14,000,000	7.3e-08	0.15	rs17421627	5	14,000,000	7.3e-08	0.15	rs17421627
rs7824557	8	23,000,000	3.8e-07	0.15	rs7824557	8	23,000,000	3.8e-07	0.15	rs7824557	8	23,000,000	3.8e-07	0.15	rs7824557

Table 2. Results for the five loci associated (p < 5.0 × 10⁻⁸) with retinal venular caliber in the discovery cohorts both combined and individually.
doi:10.1371/journal.pgen.1001184.t002

No genome-wide significant locus was identified for retinal arteriolar caliber and only one SNP was associated with retinal arteriolar caliber at a significance threshold between 5.0 × 10⁻⁸ and 1.0 × 10⁻⁶. The QQ-plot (Figure S1B) showed a departure from the line of identity at approximately p < 1.0 × 10⁻⁴. Figure 1B displays the minus log-transformed p-values for the individual SNPs against their genomic position. The most significant signal was on chromosome 13q12 (rs2281827, per minor allele (T) copy 1.0 μm (SE: 0.21) increase in arteriolar caliber; minor allele frequency (MAF): 0.23; p = 3.53 × 10⁻⁷). This signal on chromosome 13q12 was located in *FLT1*, also known as vascular endothelial growth factor receptor.

Replication in independent cohorts

Table 3 shows the results within each replication cohort for the five loci that were genome-wide significant in the discovery phase. Minor allele frequencies in the replication cohorts were very similar to that in the discovery cohorts. Four out of the five loci showed consistent effects in the combined analyses of the replication cohorts at a Bonferroni-corrected significance threshold of p < 0.01 (0.05/5, as five loci were tested in the replication phase), the exception was rs7824557 (8p23). The combined analyses of the discovery and replication cohorts yielded an overall p-value of 1.61 × 10⁻²⁵ for rs2287921 (19q13). The corresponding values for the other loci were p = 1.25 × 10⁻¹⁶ for rs225717 (6q24), p = 2.15 × 10⁻¹³ for rs10774625 (12q24) and p = 7.32 × 10⁻¹⁶ for rs17421627 (5q14). Finally, for rs7824557 (8p23) the overall p-value did not reach genome-wide significance (p = 3.80 × 10⁻⁷).

SNP	Discovery cohorts combined					Replication cohorts individually					Gene	Chrom	Position (kb)	Additional SNPs (p < 10 ⁻⁴)	
	SNP	Chr	Pos (kb)	P-value	MAF	SNP	Chr	Pos (kb)	P-value	MAF					
rs2287921	19	13,120,000	1.1e-08	0.23	rs2287921	19	13,120,000	1.1e-08	0.23	rs2287921	19	13,120,000	1.1e-08	0.23	rs2287921
rs225717	6	24,500,000	1.2e-08	0.15	rs225717	6	24,500,000	1.2e-08	0.15	rs225717	6	24,500,000	1.2e-08	0.15	rs225717
rs10774625	12	24,000,000	7.3e-08	0.15	rs10774625	12	24,000,000	7.3e-08	0.15	rs10774625	12	24,000,000	7.3e-08	0.15	rs10774625
rs17421627	5	14,000,000	7.3e-08	0.15	rs17421627	5	14,000,000	7.3e-08	0.15	rs17421627	5	14,000,000	7.3e-08	0.15	rs17421627
rs7824557	8	23,000,000	3.8e-07	0.15	rs7824557	8	23,000,000	3.8e-07	0.15	rs7824557	8	23,000,000	3.8e-07	0.15	rs7824557

Table 3. Results for the five loci associated with retinal venular caliber for the discovery, replication, and combined cohorts.
doi:10.1371/journal.pgen.1001184.t003

The regional association plots for these four loci are presented in Figure 2A–2D. After additional adjustments for hypertension and diabetes mellitus, the associations between the four replicated loci and retinal venular caliber remained the same (Table S1).

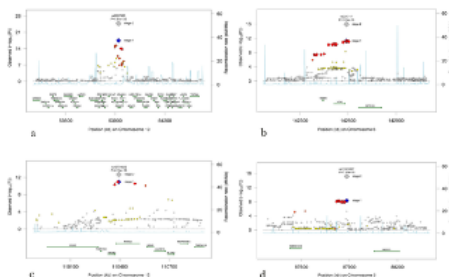


Figure 2. Regional association plots for the four novel loci. (a) Chromosome 19q13, (b) chromosome 6q24, (c) chromosome 12q24, and (d) chromosome 5q14. The blue diamonds show stage 1 p-values (discovery phase) for the top SNP at each locus, whereas the grey diamonds show the p-values following stage 2 meta-analysis including the replication cohorts for that top SNP. P-values from stage 1 for additional SNPs at each locus are colour-coded according to their linkage disequilibrium with the top SNP as follows: r² < 0.2 white, 0.2 < r² < 0.5 yellow, 0.5 < r² < 0.8 orange-red, r² > 0.8 red.
doi:10.1371/journal.pgen.1001184.g002

Associations with cardiovascular diseases

Table 4 presents the results with clinical cardiovascular diseases for the four loci that were successfully replicated in the replication cohorts. These association results provided evidence for 12q24 as a risk locus for coronary artery disease and hypertension. The allelic odds ratios of rs10774625 were 1.13 (95% confidence interval (CI): 1.03–1.24; p = 0.008) for coronary artery disease and 1.06 (95% CI: 1.01–1.12; p = 0.019) for hypertension. As we found the most convincing evidence for

rs10774625 to be associated with coronary artery disease, we examined the association with coronary artery disease for all 10 SNPs on locus 12q24 that were genome-wide significant in the current analysis with retinal venular caliber. Figure 3 shows a plot in which the p-values for these 10 SNPs from the current analysis are combined with those for coronary artery disease from WTCCC. We found that all 10 SNPs were significantly associated with coronary artery disease at a nominal p-value of 0.05 suggesting a strong overlap between the association signals of retinal venular caliber and coronary artery disease.

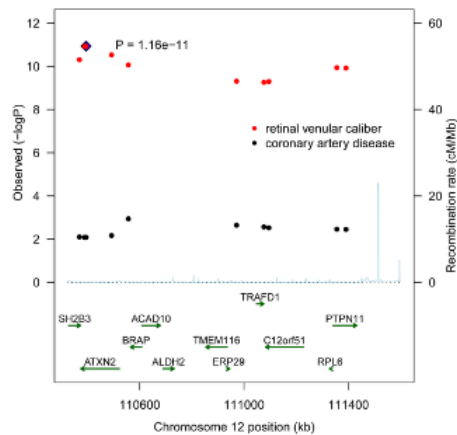


Figure 3. A combined regional association plot showing p-values from CHARGE for the 10 SNPs on 12q24 for retinal venular caliber and from WTCCC for coronary artery disease.
doi:10.1371/journal.pgen.1001184.g003

	CHARGE (CHD)	WTCCC (CAD)	AWW (CHD)	AWW (MI)	Global Sign (MI)	SKAGEN+ (MI)
rs10774625	Meta: 1.16 OR: 1.16 P: 1.16e-11	OR: 1.16 P: 1.16e-11	OR: 1.16 P: 1.16e-11	OR: 1.16 P: 1.16e-11	OR: 1.16 P: 1.16e-11	OR: 1.16 P: 1.16e-11
rs10774625	Meta: 1.16 OR: 1.16 P: 1.16e-11	OR: 1.16 P: 1.16e-11	OR: 1.16 P: 1.16e-11	OR: 1.16 P: 1.16e-11	OR: 1.16 P: 1.16e-11	OR: 1.16 P: 1.16e-11
rs10774625	Meta: 1.16 OR: 1.16 P: 1.16e-11	OR: 1.16 P: 1.16e-11	OR: 1.16 P: 1.16e-11	OR: 1.16 P: 1.16e-11	OR: 1.16 P: 1.16e-11	OR: 1.16 P: 1.16e-11
rs10774625	Meta: 1.16 OR: 1.16 P: 1.16e-11	OR: 1.16 P: 1.16e-11	OR: 1.16 P: 1.16e-11	OR: 1.16 P: 1.16e-11	OR: 1.16 P: 1.16e-11	OR: 1.16 P: 1.16e-11
rs10774625	Meta: 1.16 OR: 1.16 P: 1.16e-11	OR: 1.16 P: 1.16e-11	OR: 1.16 P: 1.16e-11	OR: 1.16 P: 1.16e-11	OR: 1.16 P: 1.16e-11	OR: 1.16 P: 1.16e-11
rs10774625	Meta: 1.16 OR: 1.16 P: 1.16e-11	OR: 1.16 P: 1.16e-11	OR: 1.16 P: 1.16e-11	OR: 1.16 P: 1.16e-11	OR: 1.16 P: 1.16e-11	OR: 1.16 P: 1.16e-11
rs10774625	Meta: 1.16 OR: 1.16 P: 1.16e-11	OR: 1.16 P: 1.16e-11	OR: 1.16 P: 1.16e-11	OR: 1.16 P: 1.16e-11	OR: 1.16 P: 1.16e-11	OR: 1.16 P: 1.16e-11
rs10774625	Meta: 1.16 OR: 1.16 P: 1.16e-11	OR: 1.16 P: 1.16e-11	OR: 1.16 P: 1.16e-11	OR: 1.16 P: 1.16e-11	OR: 1.16 P: 1.16e-11	OR: 1.16 P: 1.16e-11
rs10774625	Meta: 1.16 OR: 1.16 P: 1.16e-11	OR: 1.16 P: 1.16e-11	OR: 1.16 P: 1.16e-11	OR: 1.16 P: 1.16e-11	OR: 1.16 P: 1.16e-11	OR: 1.16 P: 1.16e-11
rs10774625	Meta: 1.16 OR: 1.16 P: 1.16e-11	OR: 1.16 P: 1.16e-11	OR: 1.16 P: 1.16e-11	OR: 1.16 P: 1.16e-11	OR: 1.16 P: 1.16e-11	OR: 1.16 P: 1.16e-11

Table 4. The association between the four novel loci and cardiovascular diseases.
doi:10.1371/journal.pgen.1001184.t004

Discussion

In this meta-analysis of GWAS data from four populations on retinal microcirculation and subsequent replication in four independent cohorts, we identified four novel loci on chromosomes 19q13, 6q24, 12q24 and 5q14 that were consistently associated with retinal venular caliber in persons of Caucasian descent at genome-wide significance of $<5.0 \times 10^{-8}$. The most significant SNPs at each of the four loci were associated with an approximate 2.0 μm change in retinal venular caliber for each copy of the minor allele. Locus 12q24 was also associated with coronary heart disease and hypertension. We did not find any loci that reached genome-wide significance for retinal arteriolar caliber, and only one SNP reached highly suggestive levels.

Our study is the first large study to evaluate common genetic variants of the microcirculation, increasingly thought to play a substantial role in the pathogenesis and development of clinical cardiovascular diseases, including coronary heart disease and stroke. The retinal vasculature provides a non-invasive direct view of the human microcirculation. Retinal venular caliber has been shown to predict a range of subclinical [5] and clinical cardiovascular disease [6]. In a recent meta-analysis, wider retinal venules were associated with a hazard ratio of 1.16 (95% CI: 1.06–1.26) for coronary artery disease in women while controlling for other known cardiovascular risk factors [11]. Furthermore, wider venular caliber predicted risk of stroke and is associated with progression of cerebral white matter lesions [10], [12]. Both systemic and environmental factors likely induce variation in retinal venular caliber along with individual genetic differences [5], [6], [17]–[20]. Wider retinal venular caliber has been hypothesized to reflect the effects of hypoxia [32], and an increased nitric oxide production and release of cytokines resulting from activated endothelial cells [33]. This is supported by clinical and epidemiological studies showing larger venular caliber to be associated with systemic biomarkers of inflammation, including C-reactive protein and interleukin-6, and with impaired fasting glucose metabolism, dyslipidemia, obesity and cigarette smoking [5], [34].

The most significant SNP associated with retinal venular caliber was in the *RASIP1* gene (rs2287921, $p = 1.61 \times 10^{-25}$) on chromosome 19q13. *RASIP1* belongs to the family of RAS molecules, which have recently been implicated in animal models to be involved in vascular development, endothelial cell migration, capillary tube assembly, blood vessel homeostasis and vascular permeability [35]. Specifically, *RASIP1* is expressed in the endothelium of the developing blood vessels and is essential for proper endothelial cell angiogenic assembly and migration [35].

On chromosome 6q24, the top SNPs were located in or adjacent to *VTA1* and *NMBR* genes. *VTA1* encodes a protein involved in trafficking of the multivesicular body, an endosomal compartment involved in sorting membrane proteins for degradation in lysosomes [36]. Neuromedin B (*NMB*) is a peptide that acts by binding to a specific receptor protein (*NMBR*) and is involved in a number of physiological processes including immune defense, thyroid, adrenocortical function and cognition. *NMB* is also aberrantly expressed by a variety of cancers and is involved in tumor cell proliferation [37].

The signals for association on chromosome 12q24 were spread across a large 1 Mb LD block, including genes such as *SH2B3*, *ATXN2* and *PTPN11*. The most significant SNP was located in *ATXN2*. Defects in the *ATXN2* are the cause of spinocerebellar ataxia type 2 (SCA 2), which belongs to the autosomal cerebellar ataxias characterized by cerebellar ataxia, optic atrophy, ophthalmoplegia and dementia. SCA 2 is caused by extension of a CAG repeat in the coding region of this gene. Another gene in this region is *SH2B3*, which is expressed by vascular endothelial cells and regulates growth factor and cytokine receptor-mediated pathways implicated in lymphoid, myeloid and platelet homeostasis [38]. Our study showed that the most significant SNP in the *SH2B3* region was rs3184504 ($p = 4.88 \times 10^{-11}$). Interestingly, this variant is associated with type 1 diabetes mellitus, a disease in which the risk of developing complications was found to be associated with wider retinal venular caliber [38]. Recent GWAS studies have shown that several SNPs at the locus 12q24 (e.g. rs11065987 in *ATXN2* and rs11066301 in *PTPN11*) are associated with platelet count, hemoglobin concentration, hematocrit, and blood pressure [39]–[41]. Furthermore, replication in independent case-control series including 9,479 cases and 10,527 controls have shown odds ratios of 1.14 (95% CI: 1.10–1.20; $p = 2.52 \times 10^{-9}$) and 1.15 (95% CI: 1.10–1.20; $p = 7.05 \times 10^{-11}$) per minor allele copy for the association of these two SNPs with coronary artery disease [39]. The corresponding allelic odds ratios for myocardial infarction were 1.17 (95% CI: 1.11–1.22; $p = 3.43 \times 10^{-10}$) and 1.18 (95% CI: 1.12–1.23; $p = 2.42 \times 10^{-12}$) [39]. In our discovery cohort, apart from rs10774625 we found nine additional

SNPs in the region that were genome-wide significant, including both rs11065987 and rs11066301 (1.5 increase in venular caliber per minor allele for both) that have also been shown to be associated with coronary heart disease and myocardial infarction. Finally, in the present study the association results from WTCCC and Global BPgen confirmed locus 12q24 to be a risk locus for both coronary artery disease and hypertension. Specifically, we found a strong overlap between the association signals of retinal venular caliber and coronary artery disease.

The most significant SNPs at the 5q14 locus were located in an intergenic region. The closest gene in this region is *MEF2C*, which is located about 200 kb downstream. Myocyte enhancer factor 2 (*MEF2*) family proteins are key transcription factors, consisting of four members *MEF2A*, *MEF2B*, *MEF2C* and *MEF2D*, controlling gene expression in myocytes, lymphocytes, and neurons. *MEF2* also plays an important role in cardiogenesis, epithelial cell survival and maintenance of blood vessel integrity. Knockout of *MEF2C* gene in mice is embryologically lethal due to failure in cardiac development [42].

We did not find any loci that reached genome-wide significance for retinal arteriolar caliber. It is possible that genetic factors play a smaller role in arteriolar caliber, which is strongly associated with increasing age and blood pressure [5]–[8]. It is also possible that multiple genetic loci determine retinal arteriolar caliber and each locus exerts only a very weak association that is not detectable using our current study sample size. Thus, in order to examine genetic associations with retinal arteriolar caliber more fully, we are currently in the process of building collaborations with several other studies to increase the sample size of the discovery cohort.

While we have identified four loci associated with retinal venular caliber, the identified SNPs may not represent the causal variants but could be in high linkage disequilibrium (LD) with the causal variants, which remain to be discovered. Further fine mapping of this genomic region will be required to facilitate expression and translational studies. Our study suggests that the effect of common genetic variants on retinal vascular caliber is small, and explain only a small proportion of the heritability of these traits [43]. It remains possible that low frequency variants might be important, but GWAS provides poor coverage of rare variants. With the study populations of predominantly Caucasian descent and stringent checks for latent population substructure, the associations are unlikely to be due to population stratification.

To conclude, our population-based GWAS demonstrate four novel loci on chromosomes 19q13 (within the *RASIP1* locus), 6q24 (adjacent to the *VTA1* and *NMBR* loci), 12q24 (in the region of the *SH2B3*, *ATXN2* and *PTPN11* loci) and 5q14 (adjacent to the *MEF2C* locus) associated with retinal venular caliber, an endophenotype of the microcirculation associated with clinical cardiovascular disease. Furthermore, locus 12q24 was also associated with coronary heart disease and hypertension. While further studies are needed to determine the causal genetic variants that underlie the heritability of this endophenotype, our findings will help focus research on novel genes and pathways involving the microvasculature and its role in the pathogenesis and development of cardiovascular disease.

Materials and Methods

Ethics statement

Each cohort secured approval from their respective institutional review boards, and all participants provided written informed consent in accordance with the Declaration of Helsinki.

Consortium organization

The CHARGE consortium included large prospective community-based cohort studies that have genome-wide marker data and extensive data on multiple phenotypes [21]. All participating studies approved guidelines for collaboration, and a working group arrived at a consensus on phenotype harmonization, covariate selection and analytic plans for within-study analyses and meta-analyses of results.

Setting

Details of cohort selection, risk factor assessment and retinal vascular caliber measurements in the four studies have been described in Text S1, section 1 [11], [22]–[25]. The AGES is a prospective study with subject recruitment from 2002–2006 of 5,764 surviving members, aged 66 years and older, of the established Reykjavik Study, a cohort of 19,381 participants assembled in 1967 to study cardiovascular disease and its risk factors among those born between 1907 and 1935 [22]. The ARIC study enrolled 15,792 men and women (including 11,478 non-Hispanic whites) from four U.S. communities to investigate the etiology and sequelae of atherosclerosis and cardiovascular risk factors [23]. Participants were between age 45 and 64 years at their baseline examination in 1987–1989. The CHS enrolled 5,888 adults 65 years and older from four field centers to study coronary artery disease and stroke. The baseline examination took place either in 1989–90 or 1992–93 [24]. The Rotterdam Study enrolled 7,983 inhabitants from a district of Rotterdam aged 55 years and older to study cardiovascular, neurological, ophthalmic and endocrine diseases. The baseline examination was in 1990–93 [25].

Study population

The AGES and Rotterdam cohorts consisted predominantly of Caucasian whites. Only non-Hispanic white participants were included from the ARIC and CHS. Retinal photographs were obtained from participants at the third examination in ARIC and the tenth in CHS. Participants were excluded if their photographs could not be graded (due to cataract, corneal opacities or poor focus) or if genotyping data were unavailable (Table 1).

Retinal vascular caliber measurements

Retinal vascular caliber was measured using standardized protocols and software that were developed initially at the University of Wisconsin and used in the ARIC study and the CHS, and following slight modifications, also in the Rotterdam and AGES studies (Text S1, section 2) [4], [5], [9], [11]. In brief, participants underwent retinal photography and optic disc-centered images were used to measure vascular caliber. Pharmacological mydriasis was used in the AGES and Rotterdam studies. For ARIC, CHS and Rotterdam the photographs of one eye were digitized using a high-resolution scanner and for the AGES study, photographs of both eyes were captured digitally. All digital retinal images were analyzed with a semi-automated retinal vessel measurement system and the calibers of all retinal arterioles and venules were measured in an area between half and one disc-diameter from the optic disc margin. The Parr-Hubbard-Knudtson formulae were used to compute summary measures for retinal arteriolar and venular calibers in micrometers (μm) and referred to as the "central retinal arteriolar and venular equivalents" [44]. Quality control (QC) measures for intergrader and intragrader intra-class correlation coefficients for retinal vascular calibers for each of the cohorts ranged from 0.76–0.99 in AGES, 0.69–0.89 in ARIC, 0.67–0.91 in CHS to 0.67–0.95 in the Rotterdam Study [4].

Genotyping

The consortium was formed after the individual studies had finalized their GWAS platform selection. The four studies included used different platforms: the Affymetrix GeneChip SNP Array 6.0 for the ARIC study, Illumina HumanCNV370-Duo for the AGES study and the CHS and the Illumina Infinium HumanHap550-chip v3.0 for the Rotterdam Study. All studies used their genotype data to impute to the 2.2 million non-monomorphic, autosomal, SNPs identified in HapMap (CEU population). Extensive QC analyses were performed in each cohort (Text S1, sections 3 and 4) [21].

Statistical analyses within discovery cohorts

Based on an *a priori* analysis plan, each study fitted an additive genetic model with a 1-degree of freedom trend test relating the retinal arteriolar or venular caliber to genotype dosage (0–2 copies of the minor allele) for each SNP, adjusting for age and sex. For the CHS and ARIC studies, the analyses were additionally adjusted for

study site. We used linear regression models to calculate regression coefficients (beta) and their standard errors (SE) using the ProbABEL program (<http://mga.bionet.nsc.ru/~yurii/ABEL/>) in AGES, ARIC and Rotterdam study and the R software in CHS (<http://www.r-project.org>). Genomic control correction was applied in each study prior to the meta-analysis. To implement genomic control, the λ_{gc} value was used to correct the SE as follows: $SE_{corrected} = SE \times \sqrt{\lambda_{gc}}$. All four cohorts showed low dispersion with inflation factors in the range of 1.030–1.071.

Meta-analysis

We conducted a meta-analysis of the beta estimates obtained from the linear regression models from the four cohorts using an inverse-variance weighting using the R software (MetABEL) (Text S1, section 5) [45]. Strand information was available from all cohorts, facilitating the meta-analysis. After QC, filtering, and imputation within each study, we restricted our meta-analysis to the 2,194,468 autosomal SNPs that were common to all cohorts. We decided *a priori* on a genome-wide significance threshold of $p < 5.0 \times 10^{-8}$ which corresponds to a p-value of 0.05 with Bonferroni correction for one million independent tests. For 2.2 million tests, it corresponds to an expectation of only 0.11 false positives, regardless of test-dependence [46]. Use of this threshold is also supported by LD patterns observed in deep sequencing work within European populations [47].

Replication analyses

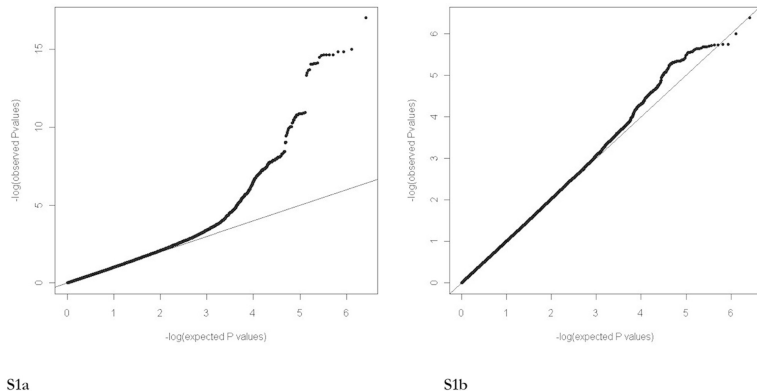
The genome-wide significant SNPs for each locus from the discovery phase were examined in four replication cohorts. The four replication sample sets included 1,709 participants from the Australian Twins Study, 1,132 from the UK Twins Study, 2,501 from the BDES and 1,310 from the BMES. Retinal vascular caliber measurements used the same methodology and formulas as in the CHARGE cohorts. Details of this and the procedures for genotyping are described in the Text S1, sections 1 and 2. In brief, in the Australian Twins Study, genotyping was performed on the Illumina Human Hap610W Quad array. In the UK Twins Study, 56% of the participants were genotyped using the Illumina 317k HumanHap duo array, whereas the remaining 44% using the Illumina HumanHap610Quad array. In the BDES, SNPs were genotyped using TaqMan SNP genotyping assays (Applied Biosystems, CA). Finally, in the BMES genotyping was performed using the Illumina 610K array.

Analyses with cardiovascular diseases

In order to examine the association between SNPs that were successfully replicated in the current study and cardiovascular diseases, we obtained association statistics for each of these SNPs from several GWA studies. We obtained these data from the WTCCC on 2000 cases with coronary artery disease and 3000 controls [3], from HVH Study on 501 cases with stroke [28], 1,172 cases with myocardial infarction and 1,314 controls [29], from Global BPgen on 8,871 cases with hypertension and 9,027 controls [30], and from DIAGRAM+ on 8,130 cases with diabetes mellitus and 38,987 controls [31]. Details of each these studies have been described in the Text S1, section 6.

Supporting Information

Figure_S1.tif



[figshare](#)

1 / 3

[download](#)

Quantile-quantile (QQ)-plot showing the minus log-transformed observed versus the expected p-values after meta-analysis for (A) retinal venular and (B) arteriolar caliber.

Figure S1.

Quantile-quantile (QQ)-plot showing the minus log-transformed observed versus the expected p-values after meta-analysis for (A) retinal venular and (B) arteriolar caliber.

doi:10.1371/journal.pgen.1001184.s001
(0.26 MB TIF)

Table S1.

The association between the top SNPs per genome-wide significant locus and retinal vascular caliber additionally adjusted for diabetes mellitus and hypertension.

doi:10.1371/journal.pgen.1001184.s002
(0.05 MB DOC)

Text S1.

Sample selection, retinal vascular caliber measurements, genotyping quality control filters and imputation, screening for latent population substructure, meta-analysis techniques, analyses with cardiovascular diseases, reference list.

doi:10.1371/journal.pgen.1001184.s003
(0.09 MB DOC)

Acknowledgments

This study makes use of data generated by the Wellcome Trust Case-Control Consortium. A full list of the investigators who contributed to the generation of the data is available from www.wtccc.org.uk. In addition, we would also like to acknowledge Laura Scott and Goncalo Abecasis from the University of Michigan who assisted with the imputation of HAPMAP Single Nucleotide Polymorphisms for the WTCCC dataset.

We would also like to acknowledge the contributions of the Diabetes Genetics Replication and Meta-analysis+(DIAGRAM+) Consortium, which looked up the associations with type 2 diabetes mellitus for the SNPs associated with retinal venular caliber.

Members of the Global Blood Pressure Genetics (BPgen) Consortium

Christopher Newton-Cheh^{1,2,3}, Toby Johnson^{4,5,6}, Vesela Gateva⁷, Martin D Tobin⁸, Murielle Bochud⁵, Lachlan Coin⁹, Samer S Najjar¹⁰, Jing Hua Zhao^{11,12}, Simon C Heath¹³, Susana Eyheramendy^{14,15}, Konstantinos Papadakis¹⁶, Benjamin F Voight^{1,3}, Laura J Scott⁷, Feng Zhang¹⁷, Martin Farrall^{18,19}, Toshiko Tanaka^{20,21}, Chris Wallace^{22,23}, John C Chambers⁹, Kay-Tea Khaw^{12,24}, Peter Nilsson²⁵, Pim van der Harst²⁶, Silvia Polidoro²⁷, Diederick E Grobbee²⁸, N Charlotte Onland-Moret^{28,29}, Michiel L Bots²⁸, Louise V Wain⁸, Katherine S Elliott¹⁹, Alexander Teumer³⁰, Jian'an Luan¹¹, Gavin Lucas³¹, Johanna Kuusisto³², Paul R Burton⁸, David Hadley¹⁶, Wendy L McArdle³³, Wellcome Trust Case Control Consortium³⁴, Morris Brown³⁵, Anna Dominiczak³⁶, Stephen J Newhouse²², Nilesh J Samani³⁷, John Webster³⁸, Eleftheria Zeggini^{19,39}, Jacques S Beckmann^{4,40}, Sven Bergmann^{4,6}, Noha Lim⁴¹, Kijoung Song⁴¹, Peter Vollenweider⁴², Gerard Waeber⁴², Dawn M Waterworth⁴¹, Xin Yuan⁴¹, Leif Groop^{43,44}, Marju Orho-Melander²⁵, Alessandra Allione²⁷, Alessandra Di Gregorio^{27,45}, Simonetta Guarrera²⁷, Salvatore Panico⁴⁶, Fulvio Ricceri²⁷, Valeria Romanazzi^{27,45}, Carlotta Sacerdote⁴⁷, Paolo Vineis^{9,27}, Inês Barroso^{12,39}, Manjinder S Sandhu^{11,12,24}, Robert N Luben^{12,24}, Gabriel J. Crawford³, Pekka Jousilahti⁴⁸, Markus Perola^{48,49}, Michael Boehnke⁷, Lori L Bonnycastle⁵⁰, Francis S Collins⁵⁰, Anne U Jackson⁷, Karen L Mohlke⁵¹, Heather M Stringham⁷, Timo T Valle⁵², Cristen J Willer⁷, Richard N Bergman⁵³, Mario A Morken⁵⁰, Angela Döring¹⁵, Christian Gieger¹⁵, Thomas Illig¹⁵, Thomas Meitinger^{54,55}, Elin Org⁵⁶, Arne Pfeufer⁵⁴, H Erich Wichmann^{15,57}, Sekar Kathiresan^{1,2,3}, Jaume Marrugat³¹, Christopher J O'Donnell^{58,59}, Stephen M Schwartz^{60,61}, David S Siscovick^{60,61}, Isaac Subirana^{31,62}, Nelson B Freimer⁶³, Anna-Liisa Hartikainen⁶⁴, Mark I McCarthy^{19,65,66}, Paul F O'Reilly⁹, Leena Peltonen^{39,49}, Anneli Pouta^{64,67}, Paul E de Jong⁶⁸, Harold Snieder⁶⁹, Wiek H van Gilst²⁶, Robert Clarke⁷⁰, Anuj Goel^{18,19}, Anders Hamsten⁷¹, John F Peden^{18,19}, Udo Seedorf⁷², Ann-Christine Syvänen⁷³, Giovanni Tognoni⁷⁴, Edward G Lakatta¹⁰, Serena Sanna⁷⁵, Paul Scheet⁷⁶, David Schlessinger⁷⁷, Angelo Scuteri⁷⁸, Marcus Dörr⁷⁹, Florian Ernst³⁰, Stephan B Felix⁷⁹, Georg Homuth³⁰, Roberto Lorbeer⁸⁰, Thorsten Reffelmann⁷⁹, Rainer Rettig⁸¹, Uwe Völker³⁰, Pilar Galan⁸², Ivo G Gut¹³, Serge Hercberg⁸², G Mark Lathrop¹³, Diana Zeleneke¹³, Panos Deloukas^{12,39}, Nicole Soranzo^{17,39}, Frances M Williams¹⁷, Guangju Zhai¹⁷, Veikko Salomaa⁴⁸, Markku Laakso³², Roberto Elosua^{31,62}, Nita G Forouhi¹¹, Henry Völzke⁸⁰, Cuno S Uiterwaal²⁸, Yvonne T van der Schouw²⁸, Giuseppa Matullo^{27,45}, Gerjan Navis⁶⁸, Göran Berglund²⁵, Sheila A Bingham^{12,83}, Jaspal S Kooner⁸⁴, John M Connell³⁶, Stefania Bandinelli⁸⁵, Luigi Ferrucci²¹, Hugh Watkins^{18,19}, Tim D Spector¹⁷, Jaakko Tuomilehto^{52,86,87}, David Altshuler^{1,3,88,89}, David P Strachan¹⁶, Maris Laan⁵⁶, Pierre Meneton⁹⁰, Nicholas J Wareham^{11,12}, Manuela Uda⁷⁵, Marjo-Riitta Jarvelin^{9,67,91}, Vincent Mooser⁴¹, Olle Melander²⁵, Ruth JF Loos^{11,12}, Paul Elliott⁹, Gonçalo R Abecasis⁹², Mark Caulfield²², Patricia B Munroe²²

- Center for Human Genetic Research, Massachusetts General Hospital, 185 Cambridge Street, Boston, MA 02114, USA
- Cardiovascular Research Center, Massachusetts General Hospital, Boston, Massachusetts 02114, USA
- Program in Medical and Population Genetics, Broad Institute of Harvard and Massachusetts Institute of Technology, Cambridge, Massachusetts, 02142, USA
- Department of Medical Genetics, University of Lausanne, 1005 Lausanne, Switzerland
- University Institute for Social and Preventative Medicine, Centre Hospitalier Universitaire Vaudois (CHUV) and University of Lausanne, 1005 Lausanne, Switzerland
- Swiss Institute of Bioinformatics, Switzerland
- Department of Biostatistics and Center for Statistical Genetics, University of Michigan, Ann Arbor, MI 48109, USA
- Departments of Health Sciences & Genetics, Adrian Building, University of Leicester, University Road, Leicester LE1 7RH
- Department of Epidemiology and Public Health, Imperial College London, St Mary's Campus, Norfolk Place, London W2 1PG, UK
- Laboratory of Cardiovascular Science, Intramural Research Program, National Institute on Aging, National Institutes of Health, Baltimore, Maryland, USA 21224
- MRC Epidemiology Unit, Institute of Metabolic Science, Addenbrooke's Hospital, Cambridge CB2 0QQ, UK
- Cambridge - Genetics of Energy Metabolism (GEM) Consortium, Cambridge, UK
- Centre National de Génotypage, 2 rue Gaston Crémieux, CP 5721, 91 057 Evry Cedex, France
- Pontificia Universidad Católica de Chile, Vicuña Mackenna 4860, Facultad de Matemáticas, Casilla 306, Santiago 22, Chile, 7820436
- Institute of Epidemiology, Helmholtz Zentrum München, German Research Centre for Environmental Health, 85764 Neuherberg, Germany
- Division of Community Health Sciences, St George's, University of London, London SW17 0RE, UK
- Department of Twin Research & Genetic Epidemiology, King's College London, London SE1 7EH
- Department of Cardiovascular Medicine, University of Oxford
- The Wellcome Trust Centre for Human Genetics, Roosevelt Drive, Oxford, OX3 7BN, UK
- Medstar Research Institute, 3001 S. Hanover Street, Baltimore, MD 21250, USA
- Clinical Research Branch, National Institute on Aging, Baltimore, MD, 21250 USA
- Clinical Pharmacology and The Genome Centre, William Harvey Research Institute, Barts and The London School of Medicine and Dentistry, Queen Mary University of London, London EC1M 6BQ
- JDRF/WT Diabetes and Inflammation Laboratory, Cambridge Institute for Medical Research University of Cambridge, Wellcome Trust/MRC Building, Addenbrooke's Hospital Cambridge, CB2 0XY
- Department of Public Health and Primary Care, Institute of Public Health, University of Cambridge, Cambridge CB2 2SR, UK
- Department of Clinical Sciences, Lund University, Malmö University Hospital, SE-20502 Malmö, Sweden
- Department of Cardiology University Medical Center Groningen, University of Groningen, Hanzeplein 1, 9700 RB Groningen, The Netherlands

27. ISI Foundation (Institute for Scientific Interchange), Villa Gualino, Torino, 10133, Italy
28. Julius Center for Health Sciences and Primary Care, University Medical Center Utrecht, STR 6.131, PO Box 85500, 3508 GA Utrecht, The Netherlands
29. Complex Genetics Section, Department of Medical Genetics - DBG, University Medical Center Utrecht, STR 2.2112, PO Box 85500, 3508 GA Utrecht, The Netherlands.
30. Interfaculty Institute for Genetics and Functional Genomics, Ernst-Moritz-Arndt-University Greifswald, 17487 Greifswald, Germany
31. Cardiovascular Epidemiology and Genetics, Institut Municipal d'Investigació Mèdica, Barcelona, Spain
32. Department of Medicine University of Kuopio 70210 Kuopio, Finland
33. ALSPAC Laboratory, Department of Social Medicine, University of Bristol, BS8 2BN, UK
34. A full list of authors is provided in the supplementary methods online.
35. Clinical Pharmacology Unit, University of Cambridge, Addenbrookes Hospital, Cambridge, UK CB2 2QQ
36. BHF Glasgow Cardiovascular Research Centre, University of Glasgow, Glasgow, UK G12 8TA
37. Department of Cardiovascular Science, University of Leicester, Glenfield Hospital, Groby Road, Leicester, LE3 9QP, UK
38. Aberdeen Royal Infirmary, Aberdeen, UK
39. Wellcome Trust Sanger Institute, Wellcome Trust Genome Campus, Hinxton, Cambridge CB10 1SA, UK
40. Service of Medical Genetics, Centre Hospitalier Universitaire Vaudois (CHUV), Lausanne, 1011, Switzerland
41. Genetics Division, GlaxoSmithKline, King of Prussia, PA 19406, USA
42. Department of Internal Medicine, Centre Hospitalier Universitaire Vaudois (CHUV) 1011 Lausanne, Switzerland
43. Department of Clinical Sciences, Diabetes and Endocrinology Research Unit, University Hospital, Malmö
44. Lund University, Malmö S-205 02, Sweden
45. Department of Genetics, Biology and Biochemistry, University of Torino, Torino, 10126, Italy
46. Department of Clinical and Experimental Medicine, Federico II University, Naples, 80100, Italy
47. Unit of Cancer Epidemiology, University of Turin and Centre for Cancer Epidemiology and Prevention (CPO Piemonte), Turin, 10126, Italy
48. National Institute for Welfare and Health P.O. Box 30, FI-00271 Helsinki, Finland
49. Institute for Molecular Medicine Finland FIMM, University of Helsinki and National Public Health Institute
50. Genome Technology Branch, National Human Genome Research Institute, Bethesda, MD 20892, USA
51. Department of Genetics, University of North Carolina, Chapel Hill, NC 27599, USA
52. Diabetes Unit, Department of Epidemiology and Health Promotion, National Public Health Institute, 00300 Helsinki, Finland
53. Physiology and Biophysics USC School of Medicine 1333 San Pablo Street, MMR 626 Los Angeles, California 90033
54. Institute of Human Genetics, Helmholtz Zentrum München, German Research Centre for Environmental Health, 85764 Neuherberg, Germany
55. Institute of Human Genetics, Technische Universität München, 81675 Munich, Germany
56. Institute of Molecular and Cell Biology, University of Tartu, 51010 Tartu, Estonia
57. Ludwig Maximilians University, IBE, Chair of Epidemiology, Munich
58. Cardiovascular Research Center and Cardiology Division, Massachusetts General Hospital, Boston, Massachusetts 02114, USA
59. Framingham Heart Study and National, Heart, Lung, and Blood Institute, Framingham, Massachusetts 01702, USA
60. Cardiovascular Health Research Unit, Departments of Medicine and Epidemiology, University of Washington, Seattle, Washington, 98101 USA
61. Department of Epidemiology, University of Washington, Seattle, Washington, 98195 USA
62. CIBER Epidemiología y Salud Pública, Barcelona, Spain
63. Center for Neurobehavioral Genetics, Gonda Center, Room 3506, 695 Charles E Young Drive South, Box 951761, UCLA, Los Angeles, CA 90095.
64. Department of Clinical Sciences/Obstetrics and Gynecology, P.O. Box 5000 Fin-90014, University of Oulu, Finland
65. Oxford Centre for Diabetes, Endocrinology and Metabolism, University of Oxford, Churchill Hospital, Old Road, Headington, Oxford OX3 7LJ, UK
66. Oxford NIHR Biomedical Research Centre, Churchill Hospital, Old Road, Headington, Oxford, UK OX3 7LJ
67. Department of Child and Adolescent Health, National Public Health Institute (KTL), Aapistie 1, P.O. Box 310, FIN-90101 Oulu, Finland
68. Division of Nephrology, Department of Medicine University Medical Center Groningen, University of Groningen, Hanzeplein 1, 9700 RB Groningen, The Netherlands
69. Unit of Genetic Epidemiology and Bioinformatics, Department of Epidemiology University Medical Center Groningen, University of Groningen, Hanzeplein 1, 9700 RB Groningen, The Netherlands
70. Clinical Trial Service Unit and Epidemiological Studies Unit (CTSU), University of Oxford, Richard Doll Building, Roosevelt Drive, Oxford, OX3 7LF, UK
71. Atherosclerosis Research Unit, Department of Medicine Solna, Karolinska Institutet, Karolinska University Hospital Solna, Building L8:03, S-17176 Stockholm, Sweden
72. Leibniz-Institut für Arterioskleroseforschung an der Universität Münster, Domagkstr. 3, D-48149, Münster, Germany

73. Molecular Medicine, Department of Medical Sciences, Uppsala University, SE-751 85 Uppsala, Sweden
74. Consorzio Mario Negri Sud, Via Nazionale, 66030 Santa Maria Imbaro (Chieti), Italy
75. Istituto di Neurogenetica e Neurofarmacologia, CNR, Monserrato, 09042 Cagliari, Italy
76. Department of Epidemiology, Univ. of Texas M. D. Anderson Cancer Center, Houston, TX 77030
77. Laboratory of Genetics, Intramural Research Program, National Institute on Aging, National Institutes of Health, Baltimore, Maryland, USA 21224
78. Unità Operativa Geriatria, Istituto Nazionale Ricovero e Cura per Anziani (INRCA) IRCCS, Rome, Italy
79. Department of Internal Medicine B, Ernst-Moritz-Arndt-University Greifswald, 17487 Greifswald, Germany
80. Institute for Community Medicine, Ernst-Moritz-Arndt-University Greifswald, 17487 Greifswald, Germany
81. Institute of Physiology, Ernst-Moritz-Arndt-University Greifswald, 17487 Greifswald, Germany
82. U557 Institut National de la Santé et de la Recherche Médicale, U1125 Institut National de la Recherche Agronomique, Université Paris 13, 74 rue Marcel Cachin, 93017 Bobigny Cedex, France
83. MRC Dunn Human Nutrition Unit, Wellcome Trust/MRC Building, Cambridge CB2 0XY, U.K
84. National Heart and Lung Institute, Imperial College London SW7 2AZ
85. Geriatric Rehabilitation Unit, Azienda Sanitaria Firenze (ASF), 50125, Florence, Italy
86. Department of Public Health, University of Helsinki, 00014 Helsinki, Finland
87. South Ostrobothnia Central Hospital, 60220 Seinäjoki, Finland
88. Department of Medicine and Department of Genetics, Harvard Medical School, Boston, Massachusetts 02115, USA
89. Diabetes Unit, Massachusetts General Hospital, Boston, Massachusetts 02114, USA
90. U872 Institut National de la Santé et de la Recherche Médicale, Faculté de Médecine Paris Descartes, 15 rue de l'Ecole de Médecine, 75270 Paris Cedex, France
91. Institute of Health Sciences and Biocenter Oulu, Aapistie 1, FIN-90101, University of Oulu, Finland
92. Center for Statistical Genetics, Department of Biostatistics, University of Michigan, Ann Arbor, Michigan 48109 USA

Author Contributions

Conceived and designed the experiments: RK BEKK MMBB NC PM AGU FR AH PTVMdJ CMvD BMP FJ GE TA L.JL KDT SKI C.JH JIR EB VG DSS JRV TYW. Analyzed the data: MKI SX RAJ MFC AWH MAI JJW GL FR CMvD LK CYC AVS NLG TL BM TBH XL QX TAS DAM SM NGM TLY JCB KLW SRH TA SF EGH EST TYW. Wrote the paper: MKI SX RAJ MFC AWH MAI JJW RK BEKK MMBB NC GL PM AGU AH PTVMdJ LK CYC AVS NLG TL BM BMP FJ GE TA TBH L.JL KDT SKI SKI QX TAS DAM SM NGM TLY C.JH TA SF JA EGH RJS FMAI JIR AKM EB EST VG DSS JRV TYW.

References

1. Camini PG, Crea F (2007) Coronary microvascular dysfunction. *N Engl J Med* 356: 830–840.
View Article • PubMed/NCBI • Google Scholar
2. Watkins H, Farrall M (2006) Genetic susceptibility to coronary artery disease: from promise to progress. *Nat Rev Genet* 7: 163–173.
View Article • PubMed/NCBI • Google Scholar
3. Wellcome Trust Case Control Consortium (2007) Genome-wide association study of 14,000 cases of seven common diseases and 3,000 shared controls. *Nature* 447: 661–678.
View Article • PubMed/NCBI • Google Scholar
4. Hubbard LD, Brothers RJ, King WN, Clegg LX, Klein R, et al. (1999) Methods for evaluation of retinal microvascular abnormalities associated with hypertension/sclerosis in the Atherosclerosis Risk in Communities Study. *Ophthalmology* 106: 2269–2280.
View Article • PubMed/NCBI • Google Scholar
5. Ikram MK, De Jong FJ, Vingerling JR, Witteman JC, Hofman A, et al. (2004) Are retinal arteriolar or venular diameters associated with markers for cardiovascular disorders? The Rotterdam Study. *Invest Ophthalmol Vis Sci* 45: 2129–2134.
View Article • PubMed/NCBI • Google Scholar
6. Wong TY, Mitchell P (2004) Hypertensive retinopathy. *N Engl J Med* 351: 2310–2317.
View Article • PubMed/NCBI • Google Scholar
7. Wong TY, Klein R, Sharrett AR, Duncan BB, Couper DJ, et al. (2004) Atherosclerosis Risk in Communities Study. Retinal arteriolar diameter and risk for hypertension. *Ann Intern Med* 140: 248–255.
View Article • PubMed/NCBI • Google Scholar
8. Wong TY, Klein R, Sharrett AR, Schmidt MI, Pankow JS, et al. (2002) Retinal arteriolar narrowing and risk of diabetes mellitus in middle-aged persons. *JAMA* 287: 2528–2533.
View Article • PubMed/NCBI • Google Scholar
9. Qiu C, Cotch MF, Sigurdsson S, Garcia M, Klein R, et al. (2008) Retinal and cerebral microvascular signs and diabetes: the age, gene/environment susceptibility-Reykjavik study. *Diabetes* 57: 1645–1650.
View Article • PubMed/NCBI • Google Scholar
10. McGeeshan K, Liew G, Macaskill P, Irwig L, Klein R, et al. (2009) Prediction of incident stroke events based on retinal vessel caliber: a systematic review and individual-participant meta-analysis. *Am J Epidemiol* 170: 1323–1332.
View Article • PubMed/NCBI • Google Scholar

11. McGeechan K, Liew G, Macaskill P, Irwig L, Klein R, et al. (2009) Meta-analysis: retinal vessel caliber and risk for coronary heart disease. *Ann Intern Med* 151: 404–413.
View Article • PubMed/NCBI • Google Scholar
12. Ikram MK, De Jong FJ, Van Dijk EJ, Prins ND, Hofman A, et al. (2006) Retinal vessel diameters and cerebral small vessel disease: The Rotterdam Scan Study. *Brain* 129: 182–188.
View Article • PubMed/NCBI • Google Scholar
13. Longstreth W Jr, Larsen EK, Klein R, Wong TY, Sharrett AR, et al. (2007) Associations between findings on cranial magnetic resonance imaging and retinal photography in the elderly: the Cardiovascular Health Study. *Am J Epidemiol* 165: 78–84.
View Article • PubMed/NCBI • Google Scholar
14. Jeganathan VS, Kawasaki R, Wang JJ, Aung T, Mitchell P, et al. (2008) Retinal vascular caliber and age-related macular degeneration: the Singapore Malay Eye Study. *Am J Ophthalmol* 146: 954–959.
View Article • PubMed/NCBI • Google Scholar
15. Nguyen TT, Wang JJ, Sharrett AR, Islam FM, Klein R, et al. (2008) Relationship of retinal vascular caliber with diabetes and retinopathy: the Multi-Ethnic Study of Atherosclerosis (MESA). *Diabetes Care* 31: 544–549.
View Article • PubMed/NCBI • Google Scholar
16. Klein R, Klein BE, Moss SE, Wong TY (2007) Retinal vessel caliber and microvascular and macrovascular disease in type 2 diabetes: XXI: the Wisconsin Epidemiologic Study of Diabetic Retinopathy. *Ophthalmology* 114: 1884–1892.
View Article • PubMed/NCBI • Google Scholar
17. Xing C, Klein BE, Klein R, Jun G, Lee KE, et al. (2006) Genome-wide linkage study of retinal vessel diameters in the Beaver Dam Eye Study. *Hypertension* 47: 797–802.
View Article • PubMed/NCBI • Google Scholar
18. Wang JJ, Wong TY (2006) Genetic determinants of retinal vascular caliber: additional insights into hypertension pathogenesis. *Hypertension* 47: 644–645.
View Article • PubMed/NCBI • Google Scholar
19. Liew G, Shankar A, Wang JJ, Klein R, Bray MS, et al. (2007) Apolipoprotein E gene polymorphisms and retinal vascular signs: the atherosclerosis risk in communities (ARIC) study. *Arch Ophthalmol* 125: 813–818.
View Article • PubMed/NCBI • Google Scholar
20. De Jong FJ, Ikram MK, Despret DD, Uitterlinden AG, Hofman A, et al. (2007) Complement factor h polymorphism, inflammatory mediators, and retinal vessel diameters: the rotterdam study. *Invest Ophthalmol Vis Sci* 48: 3014–3018.
View Article • PubMed/NCBI • Google Scholar
21. Psaty BM, O'Donnell CJ, Gudnason V, Lunetta KL, Folsom AR, et al. (2009) Cohorts for Heart and Aging Research in Genomic Epidemiology (CHARGE) Consortium: Design of prospective meta-analyses of genome-wide association studies from five cohorts. *Circ Cardiovasc Genet* 2: 73–80.
View Article • PubMed/NCBI • Google Scholar
22. Harris TB, Launer LJ, Eiriksdottir G, Kjartansson O, Jonsson PV, et al. (2007) Age, Gene/Environment Susceptibility-Reykjavik Study: multidisciplinary applied phenomics. *Am J Epidemiol* 165: 1076–1087.
View Article • PubMed/NCBI • Google Scholar
23. The Atherosclerosis Risk in Communities (ARIC) Study: design and objectives (1989) The ARIC investigators. *Am J Epidemiol* 129: 687–702.
View Article • PubMed/NCBI • Google Scholar
24. Fried LP, Borhani NO, Enright P, Furberg CD, Gardin JM, et al. (1991) The Cardiovascular Health study: design and rationale. *Ann Epidemiol* 1: 263–276.
View Article • PubMed/NCBI • Google Scholar
25. Hofman A, Breteler MM, van Duijn CM, Janssen HL, Krestin GP, et al. (2009) The Rotterdam Study: 2010 objectives and design update. *Eur J Epidemiol* 24: 553–572.
View Article • PubMed/NCBI • Google Scholar
26. Mackey DA, Mackinnon JR, Brown SA, Kearns LS, Ruddle JB, et al. (2009) Twins Eye Study in Tasmania (TEST): Rationale and Methodology to Recruit and Examine Twins. *Twin Res Hum Genet* 12: 441–454.
View Article • PubMed/NCBI • Google Scholar
27. Hammond CJ, Snieder H, Spector TD, Gilbert CE (2000) Genetic and environmental factors in age-related nuclear cataracts in monozygotic and dizygotic twins. *N Engl J Med* 342: 1786–1790.
View Article • PubMed/NCBI • Google Scholar
28. Psaty BM, Heckbert SR, Koepsell TD, Siscovick DS, Raghunathan TE, et al. (1995) The risk of myocardial infarction associated with antihypertensive drug therapies. *JAMA* 274: 620–625.
View Article • PubMed/NCBI • Google Scholar
29. Klungel OH, Heckbert SR, Longstreth WT Jr, Furberg CD, Kaplan RC, et al. (2001) Antihypertensive drug therapies and the risk of ischemic stroke. *Arch Intern Med* 161: 37–43.
View Article • PubMed/NCBI • Google Scholar
30. Newton-Cheh C, Johnson T, Gateva V, Tobin MD, Bochud M, et al. (2009) Genome-wide association study identifies eight loci associated with blood pressure. *Nat Genet* 41: 666–676.
View Article • PubMed/NCBI • Google Scholar
31. Voight BF, Scott LJ, Steinthorsdottir V, Morris AP, Dina C, et al. (2010) Twelve type 2 diabetes susceptibility loci identified through large-scale association analysis. *Nat Genet* 42: 579–589.
View Article • PubMed/NCBI • Google Scholar
32. Tamai K, Matsubara A, Tomida K, Matsuda Y, Morita H, et al. (2002) Lipid hydroperoxide stimulates leukocyte-endothelium interaction in the retinal microcirculation. *Exp Eye Res* 75: 69–75.

[View Article](#) • [PubMed/NCBI](#) • [Google Scholar](#)

- 33.** Chester AH, Borland JA, Buttery LD, Mitchell JA, Cunningham DA, et al. (1998) Induction of nitric oxide synthase in human vascular smooth muscle: interactions between proinflammatory cytokines. *Cardiovasc Res* 38: 814–821.
[View Article](#) • [PubMed/NCBI](#) • [Google Scholar](#)
- 34.** Wong TY, Islam FM, Klein R, Klein BE, Cotch MF, et al. (2006) Retinal vascular caliber, cardiovascular risk factors and inflammation: the Multi-Ethnic Study of Atherosclerosis. *Invest Ophthalmol Vis Sci* 47: 2341–2350.
[View Article](#) • [PubMed/NCBI](#) • [Google Scholar](#)
- 35.** Xu K, Chong DC, Rankin SA, Zorn AM, Cleaver O (2009) RASIP1 is required for endothelial cell motility, angiogenesis and vessel formation. *Dev Biol* 329: 269–279.
[View Article](#) • [PubMed/NCBI](#) • [Google Scholar](#)
- 36.** Xiao J, Xia H, Zhou J, Azmi IF, Davies BA, et al. (2008) Structural Basis of Vta1 Function in the Multivesicular Body Sorting Pathway. *Dev Cell* 14: 37–49.
[View Article](#) • [PubMed/NCBI](#) • [Google Scholar](#)
- 37.** Matusiak D, Glover S, Nathaniel R, Matkowskyj K, Yang J, et al. (2005) Neuromedin B and its receptor are mitogens in both normal and malignant epithelial cells lining the colon. *Am J Physiol Gastrointest Liver Physiol* 288: 718–728.
[View Article](#) • [PubMed/NCBI](#) • [Google Scholar](#)
- 38.** Smyth DJ, Plagnol V, Walker NM, Cooper JD, Downes K, et al. (2008) Shared and distinct genetic variants in type 1 diabetes and celiac disease. *N Engl J Med* 359: 2767–2777.
[View Article](#) • [PubMed/NCBI](#) • [Google Scholar](#)
- 39.** Soranzo N, Spector TD, Mangino M, Kühnel B, Rendon A, et al. (2009) A genome-wide meta-analysis identifies 22 loci associated with eight hematological parameters in the HaemGen consortium. *Nat Genet* 41: 1182–1190.
[View Article](#) • [PubMed/NCBI](#) • [Google Scholar](#)
- 40.** Ganesh SK, Zakai NA, Van Rooij FJ, Soranzo N, Smith AV, et al. (2009) Multiple loci influence erythrocyte phenotypes in the CHARGE consortium. *Nat Genet* 41: 1191–1198.
[View Article](#) • [PubMed/NCBI](#) • [Google Scholar](#)
- 41.** Levy D, Ehret GB, Rice K, Verwoert GC, Launer LJ, et al. (2009) Genome-wide association study of blood pressure and hypertension. *Nat Genet.* in press.
[View Article](#) • [PubMed/NCBI](#) • [Google Scholar](#)
- 42.** Ma K, Chan JK, Zhu G, Wu Z (2005) Myocyte enhancer factor 2 acetylation by p300 enhances its DNA binding activity, transcriptional activity, and myogenic differentiation. *Mol Cell Biol* 25: 3575–3582.
[View Article](#) • [PubMed/NCBI](#) • [Google Scholar](#)
- 43.** Manolio TA, Collins FS, Cox NJ, Goldstein DB, Hindorf LA, et al. (2009) Finding the missing heritability of complex diseases. *Nature* 461: 747–753.
[View Article](#) • [PubMed/NCBI](#) • [Google Scholar](#)
- 44.** Knudtson MD, Lee KE, Hubbard LD, Wong TY, Klein R, et al. (2003) Revised formulas for summarizing retinal vessel diameters. *Curr Eye Res* 27: 143–149.
[View Article](#) • [PubMed/NCBI](#) • [Google Scholar](#)
- 45.** Schlesselman JJ (1997) Risk of endometrial cancer in relation to use of combined oral contra-ceptives: a practitioner's guide to meta-analysis. *Human Reprod* 12: 1851–1863.
[View Article](#) • [PubMed/NCBI](#) • [Google Scholar](#)
- 46.** Gordon A, Glazko G, Qiu X, Yakovlev A (2007) Control of the mean number of false discoveries, Bonferroni and stability of multiple testing. *Ann Appl Statistics* 1: 179–190.
[View Article](#) • [PubMed/NCBI](#) • [Google Scholar](#)
- 47.** Hoggart CJ, Clark TG, De Iorio M, Whittaker JC, Balding DJ (2008) Genome-wide significance for dense SNP and resequencing data. *Genet Epidemiol* 32: 179–185.
[View Article](#) • [PubMed/NCBI](#) • [Google Scholar](#)